

**INSTRUMENT
APPROACH
CHART - ICAO**

Note : Approach ICAO Flight Procedures.

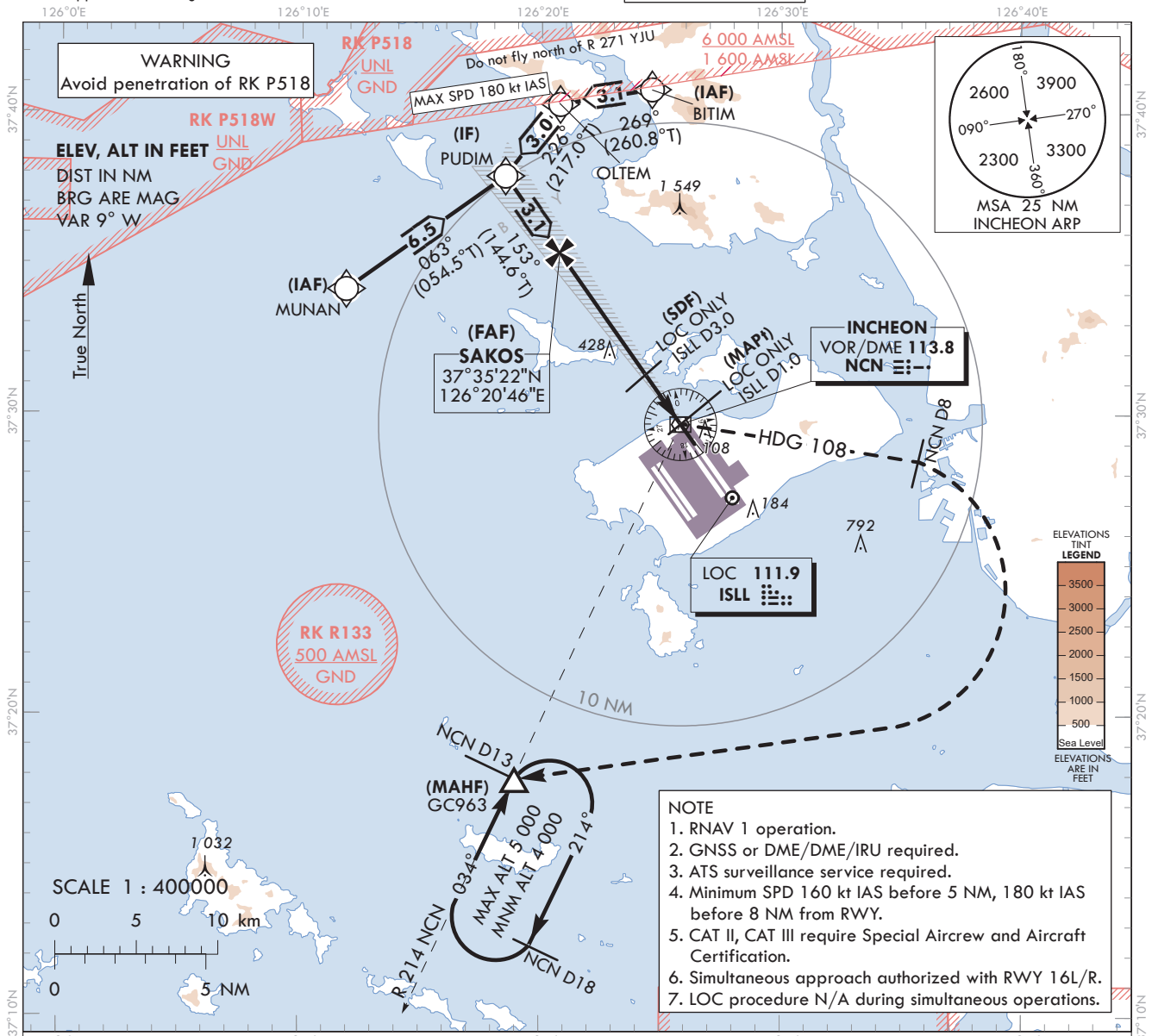
AERODROME ELEV 23 ft
HEIGHTS RELATED TO
THR RWY 15L - ELEV 23 ft

SEOUL APP	119.75
	121.35
INCHEON TWR	118.2
	118.8

SEOUL/Incheon Intl(RKSI)

ILS Z or LOC Z RWY 15L

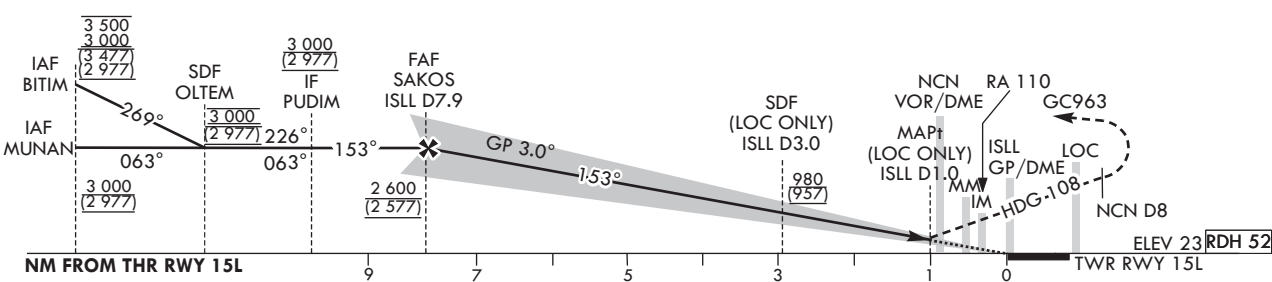
CAT II & III



- NOTE**
1. RNAV 1 operation.
 2. GNSS or DME/DME/IRU required.
 3. ATS surveillance service required.
 4. Minimum SPD 160 kt IAS before 5 NM, 180 kt IAS before 8 NM from RWY.
 5. CAT II, CAT III require Special Aircrew and Aircraft Certification.
 6. Simultaneous approach authorized with RWY 16L/R.
 7. LOC procedure N/A during simultaneous operations.

TRANSITION ALT 14 000
TRANSITION LVL FL 140

RECOMMENDED PROFILE		DME ISLL	7	6	5	4	3	2
Final Approach Gradient 5.37%, 326 ft/NM		ALT(HGT)	2 306 (2 283)	1 980 (1 957)	1 653 (1 630)	1 327 (1 304)	1 001 (978)	674 (651)



CATEGORY	DA(DH)/MDA(MDH)	A				B				C				D			
		RVR		VIS		RVR		VIS		RVR		VIS		RVR		VIS	
Straight-in	CAT-I	FULL	223		RVR 550 m, VIS 800 m												
		ALS INOP	(200)		1 200 m												
	LOC	FULL	370		900 m												
		ALS INOP	(347)		1 600 m												
CAT II	123(100)	300 m				300 m ¹⁾ / 350 m											
CAT III	-	75 m ²⁾ / 125 m															

MISSED APPROACH
Climb to 520 ft on RWY HDG then turn left on HDG 108° to NCN 8 DME, continue climb to 4 000 ft turn right direct to GC963. Hold as published.
Do not turn before passing MAPt.
1) For CAT D aeroplane conducting an autoland.
2) Aeroplane use Fail-operational system.
* Timing Not authorized for defining MAPt.
* Circling Not authorized.

Change : Establishment of RA information.

SEOUL/Incheon Intl(RKSI)
ILS Z or LOC Z RWY 15L
CAT II & III

AERONAUTICAL DATA TABULATION

ILS Z/LOC Z Approach to RWY 15L from MUNAN to PUDIM(IF)	
Fix / Point	Coordinates
MUNAN(IAF)	37°34'09.3"N 126°11'53.0"E
PUDIM(IF)	37°37'54.2"N 126°18'30.0"E

ILS Z/LOC Z Approach to RWY 15L from BITIM to PUDIM(IF)	
Fix / Point	Coordinates
BITIM(IAF)	37°40'48.0"N 126°24'36.1"E
OLTEM(SDF)	37°40'18.2"N 126°20'46.3"E
PUDIM(IF)	37°37'54.2"N 126°18'30.0"E

ILS Z/LOC Z Approach to RWY 15L from PUDIM(IF) to MAHF	
Fix / Point	Coordinates
SAKOS(FAF) BRG 153.15°/7.92 NM ISLL	37°35'22.4"N 126°20'45.7"E
D3.0 ISLL(SDF) (LOC ONLY) BRG 153.15°/2.98 NM ISLL	37°31'20.2"N 126°24'21.7"E
D1.0 ISLL(MAPt) (LOC ONLY) BRG 153.15°/0.98 NM ISLL	37°29'42.2"N 126°25'49.0"E
NCN VOR/DME	37°29'41.7"N 126°25'49.2"E
THR RWY 15L	37°29'02.20"N 126°26'24.56"E
ISLL DME	37°28'56.4"N 126°26'35.6"E
Climb to 520 ft HDG 153	-
D8 NCN HDG 108	-
GC963 BRG 213.53°/13.00 NM NCN	37°17'53.0"N 126°18'58.0"E

**INSTRUMENT
APPROACH
CHART - ICAO**

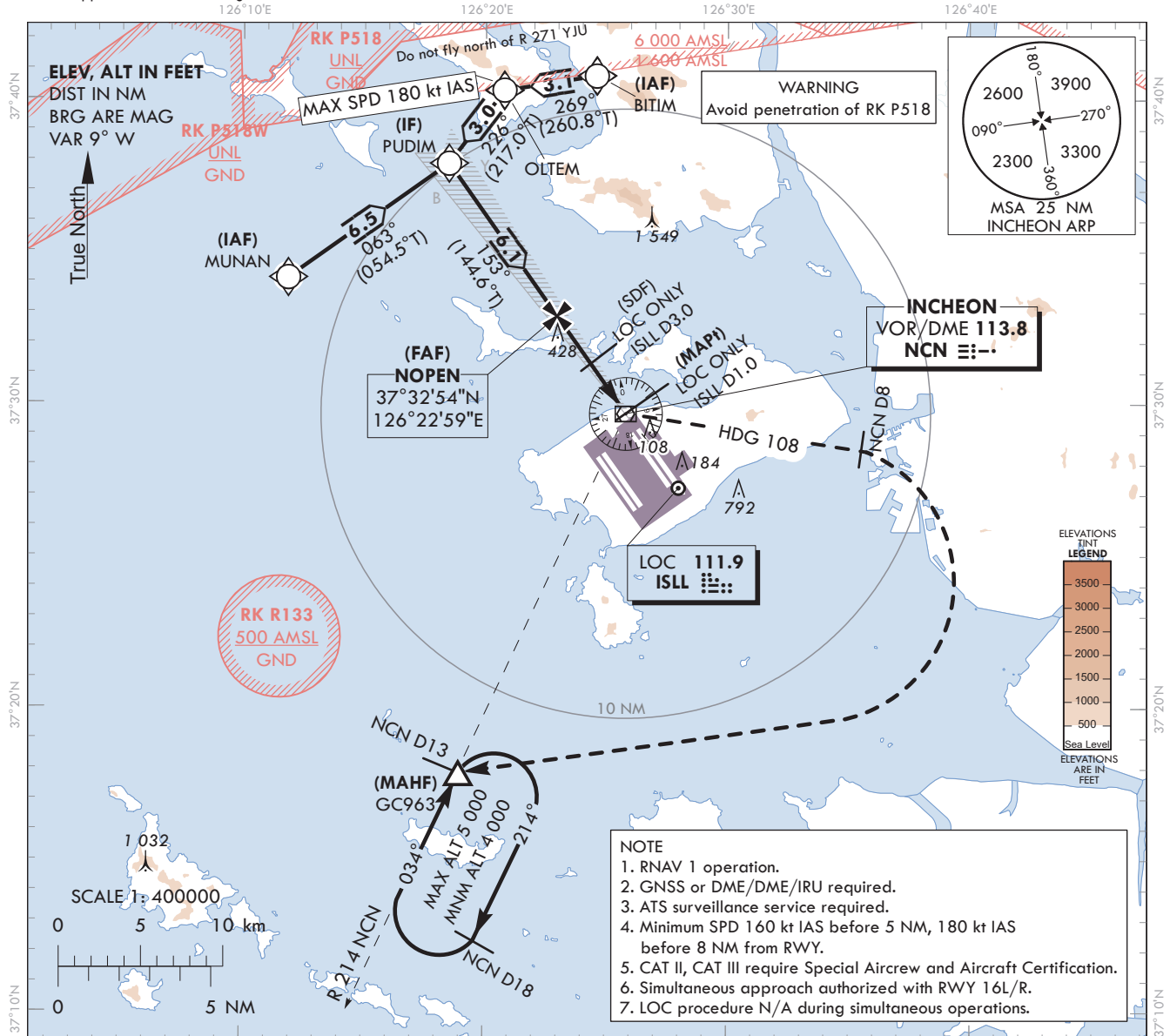
AERODROME ELEV 23 ft
HEIGHTS RELATED TO
THR RWY 15L - ELEV 23 ft

SEOUL APP 119.75
121.35
INCHEON TWR 118.2
118.8

SEOUL/Incheon Intl(RKSI)

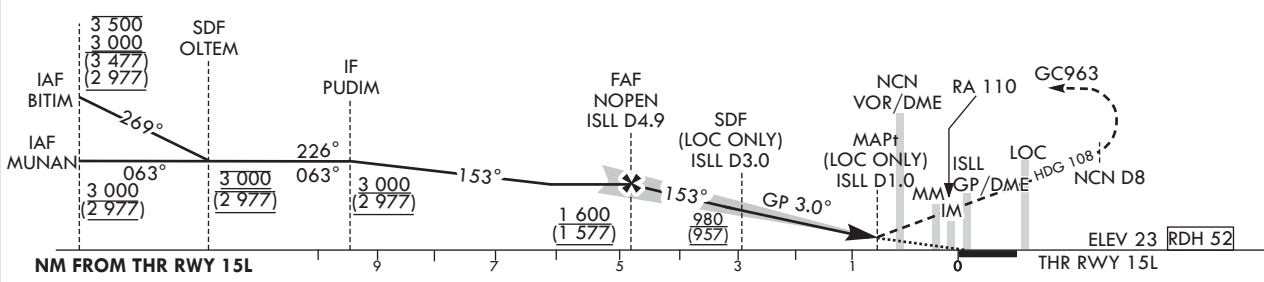
**ILS Y or LOC Y RWY 15L
CAT II & III**

Note : Approach under ICAO Flight Procedures.



- NOTE**
1. RNAV 1 operation.
 2. GNSS or DME/DME/IRU required.
 3. ATS surveillance service required.
 4. Minimum SPD 160 kt IAS before 5 NM, 180 kt IAS before 8 NM from RWY.
 5. CAT II, CAT III require Special Aircrew and Aircraft Certification.
 6. Simultaneous approach authorized with RWY 16L/R.
 7. LOC procedure N/A during simultaneous operations.

TRANSITION ALT 14 000 TRANSITION LVL FL 140	RECOMMENDED PROFILE			DME ISLL			
	Final Approach Gradient 5.30%, 322 ft/NM			4	3	2	
				ALT(HGT)	1 310 (1 287)	982 (965)	666 (643)



CATEGORY	DA(DH)/MDA(MDH)	A				B				C				D			
		A		B		A		B		A		B		A		B	
Straight-in	CAT-I	FULL	223		RVR 550 m, VIS 800 m		1 200 m		900 m		1 600 m		300 m		300 m ¹⁾ / 350 m		
		ALS INOP	(200)														
	LOC	FULL	370														
		ALS INOP	(347)														
	CAT II	123(100)															
	CAT III	-															

MISSED APPROACH
Climb to 520 ft on RWY HDG then turn left on HDG 108° to NCN 8 DME, continue climb to 4 000 ft turn right direct to GC963. Hold as published. Do not turn before passing MAPt.
1) For CAT D aeroplane conducting an autoland.
2) Aeroplane use Fail-operational system.
* Timing Not authorized for defining MAPt.
* Circling Not authorized.

Change : Establishment of RA information.

SEOUL/Incheon Intl(RKSI)
ILS Y or LOC Y RWY 15L
CAT II & III

AERONAUTICAL DATA TABULATION

ILS Y/LOC Y Approach to RWY 15L from MUNAN to PUDIM(IF)	
Fix / Point	Coordinates
MUNAN(IAF)	37°34'09.3"N 126°11'53.0"E
PUDIM(IF)	37°37'54.2"N 126°18'30.0"E

ILS Y/LOC Y Approach to RWY 15L from BITIM to PUDIM(IF)	
Fix / Point	Coordinates
BITIM(IAF)	37°40'48.0"N 126°24'36.1"E
OLTEM(SDF)	37°40'18.2"N 126°20'46.3"E
PUDIM(IF)	37°37'54.2"N 126°18'30.0"E

ILS Y/LOC Y Approach to RWY 15L from PUDIM(IF) to MAHF	
Fix / Point	Coordinates
NOPEN(FAF) BRG 153.15°/4.89 NM ISLL	37°32'53.5"N 126°22'58.5"E
D3.0 ISLL (SDF LOC ONLY) BRG 153.15°/2.98 NM ISLL	37°31'20.2"N 126°24'21.7"E
D1.0 ISLL (MAPt LOC ONLY) BRG 153.15°/0.98 NM ISLL	37°29'42.2"N 126°25'49.0"E
NCN VOR/DME	37°29'41.7"N 126°25'49.2"E
THR RWY 15L	37°29'02.20"N 126°26'24.56"E
ISLL DME	37°28'56.4"N 126°26'35.6"E
Climb to 520 ft HDG 153	-
D8 NCN HDG 108	-
GC963 BRG 213.53°/13.00 NM NCN	37°17'53.0"N 126°18'58.0"E

**INSTRUMENT
APPROACH
CHART - ICAO**

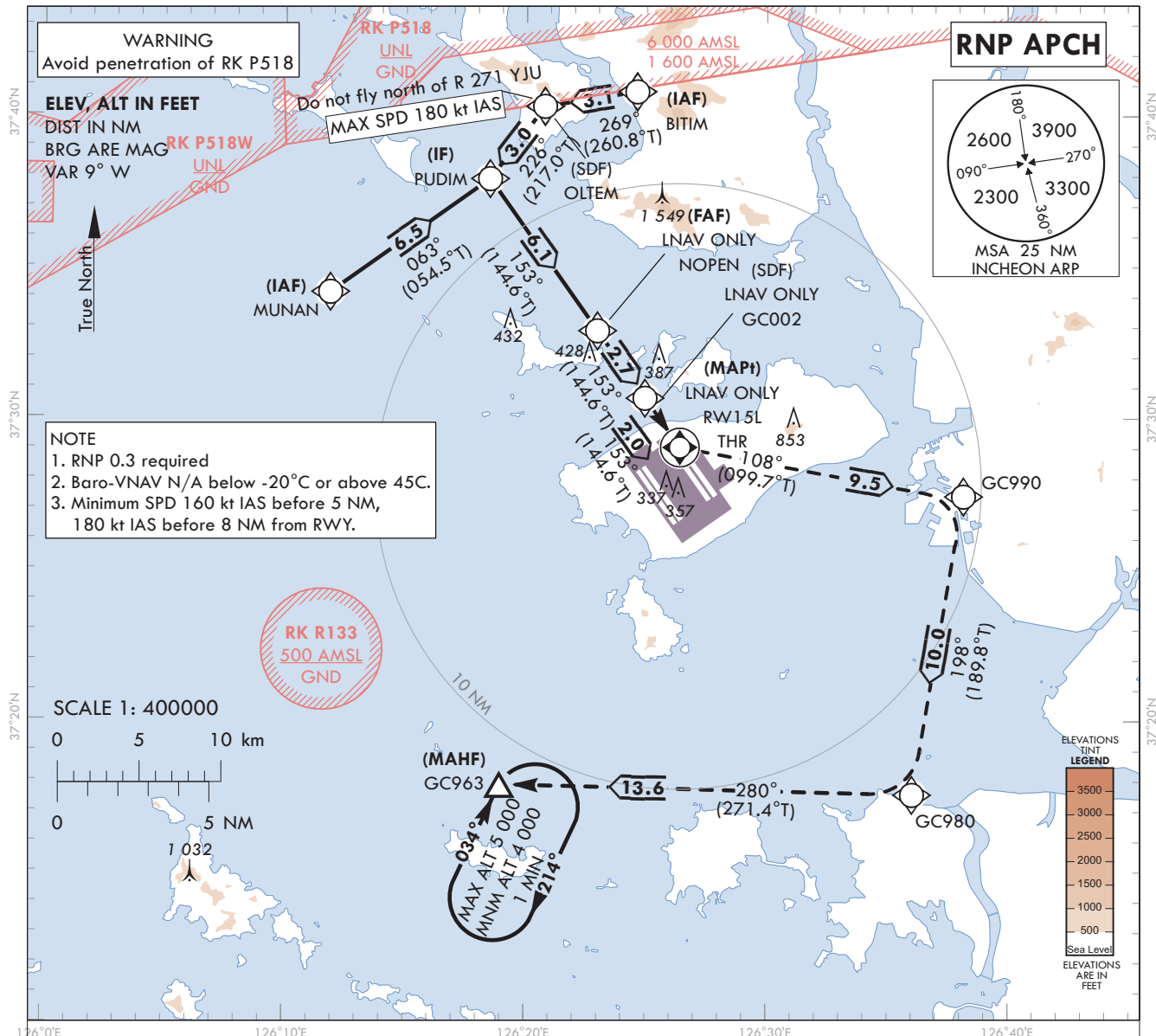
AERODROME ELEV 23 ft
HEIGHTS RELATED TO
THR RWY 15L - ELEV 23 ft

SEOUL APP 119.75
121.35
INCHEON TWR 118.2
118.8

SEOUL/Incheon Intl(RKSI)

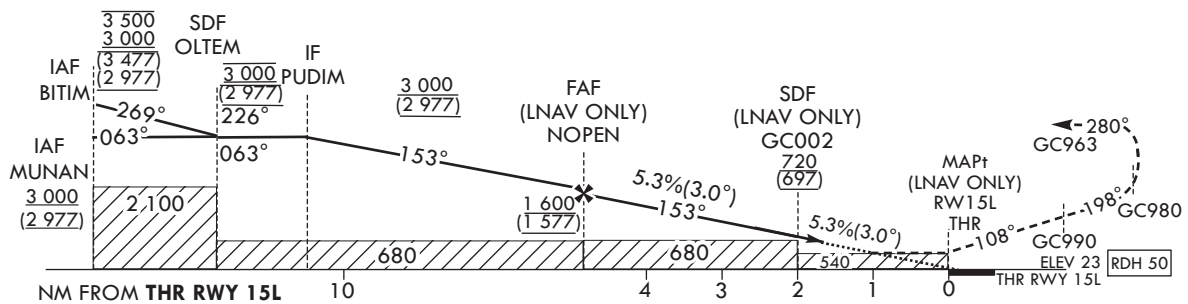
RNP RWY 15L

Note : Approach under ICAO Flight Procedures.
126°0'E 126°10'E 126°20'E 126°30'E 126°40'E



MISSED APPROACH

Climb to 4 000 ft. Track to GC990, GC980 and GC963. Hold as published.



Change : Improved clarity such as terrain.

AERONAUTICAL DATA TABULATION

Instrument Approach Procedure Coding Tables

RNP RWY 15L - via MUNAN(IAF) to GC963(MAHF)

Serial Number	Path Descriptor	Waypoint Identifier	Fly-over	Course/Track °M(°T)	Distance (NM)	Turn direction	Altitude (ft)	Speed (kt)	Coordinates	VPA/RDH	Navigation specification	Remarks
001	IF	MUNAN	-	-	-	-	+3 000	-	37°34'09.3"N 126°11'53.0"E	-	RNP APCH	IAF
002	TF	PUDIM	-	063 (054.5)	6.5	-	+3 000	-	37°37'54.2"N 126°18'30.0"E	-	RNP APCH	IF
003	TF	NOPEM	-	153 (144.6)	6.1	-	+1 600	-	37°32'53.5"N 126°22'58.5"E	-	RNP APCH	FAF
004	TF	GC002	-	153 (144.6)	2.7	-	+720	-	37°30'40.2"N 126°24'57.3"E	-	RNP APCH	SDF
005	TF	RW15L	Y	153 (144.6)	2.0	-	+540	-	37°29'02.20"N 126°26'24.56"E	-3.05/50	RNP APCH	MAPt
006	TF	GC990	-	108 (099.7)	9.5	-	-	-	37°27'25.8"N 126°38'10.3"E	-	RNP APCH	-
007	TF	GC980	-	198 (189.8)	10.0	-	-	-	37°17'33.8"N 126°36'02.5"E	-	RNP APCH	-
008	TF	GC963	Y	280 (271.4)	13.6	-	+4 000	-	37°17'53.0"N 126°18'58.0"E	-	RNP APCH	-
009	HM	GC963	Y	034 (025.0)	-	R	-5 000 +4 000	-	37°17'53.0"N 126°18'58.0"E	-	RNP APCH	1 min (Outbound timing)

RNP RWY 15L - via BITIM(IAF) to GC963(MAHF)

Serial Number	Path Descriptor	Waypoint Identifier	Fly-over	Course/Track °M(°T)	Distance (NM)	Turn direction	Altitude (ft)	Speed (kt)	Coordinates	VPA/RDH	Navigation specification	Remarks
001	IF	BITIM	-	-	-	-	-3 500 +3 000	-	37°40'48.0"N 126°24'36.1"E	-	RNP APCH	IAF
002	TF	OLTEM	-	269 (260.8)	3.1	-	@3 000	-180	37°40'18.2"N 126°20'46.3"E	-	RNP APCH	SDF
003	TF	PUDIM	-	226 (217.0)	3.0	-	+3 000	-	37°37'54.2"N 126°18'30.0"E	-	RNP APCH	IF
004	TF	NOPEM	-	153 (144.6)	6.1	-	+1 600	-	37°32'53.5"N 126°22'58.5"E	-	RNP APCH	FAF
005	TF	GC002	-	153 (144.6)	2.7	-	+720	-	37°30'40.2"N 126°24'57.3"E	-	RNP APCH	SDF
006	TF	RW15L	Y	153 (144.6)	2.0	-	+540	-	37°29'02.20"N 126°26'24.56"E	-3.05/50	RNP APCH	MAPt
007	TF	GC990	-	108 (099.7)	9.5	-	-	-	37°27'25.8"N 126°38'10.3"E	-	RNP APCH	-
008	TF	GC980	-	198 (189.8)	10.0	-	-	-	37°17'33.8"N 126°36'02.5"E	-	RNP APCH	-
009	TF	GC963	Y	280 (271.4)	13.6	-	+4 000	-	37°17'53.0"N 126°18'58.0"E	-	RNP APCH	-
010	HM	GC963	Y	034 (025.0)	-	R	-5 000 +4 000	-	37°17'53.0"N 126°18'58.0"E	-	RNP APCH	1 min (Outbound timing)

**INSTRUMENT
APPROACH
CHART - ICAO**

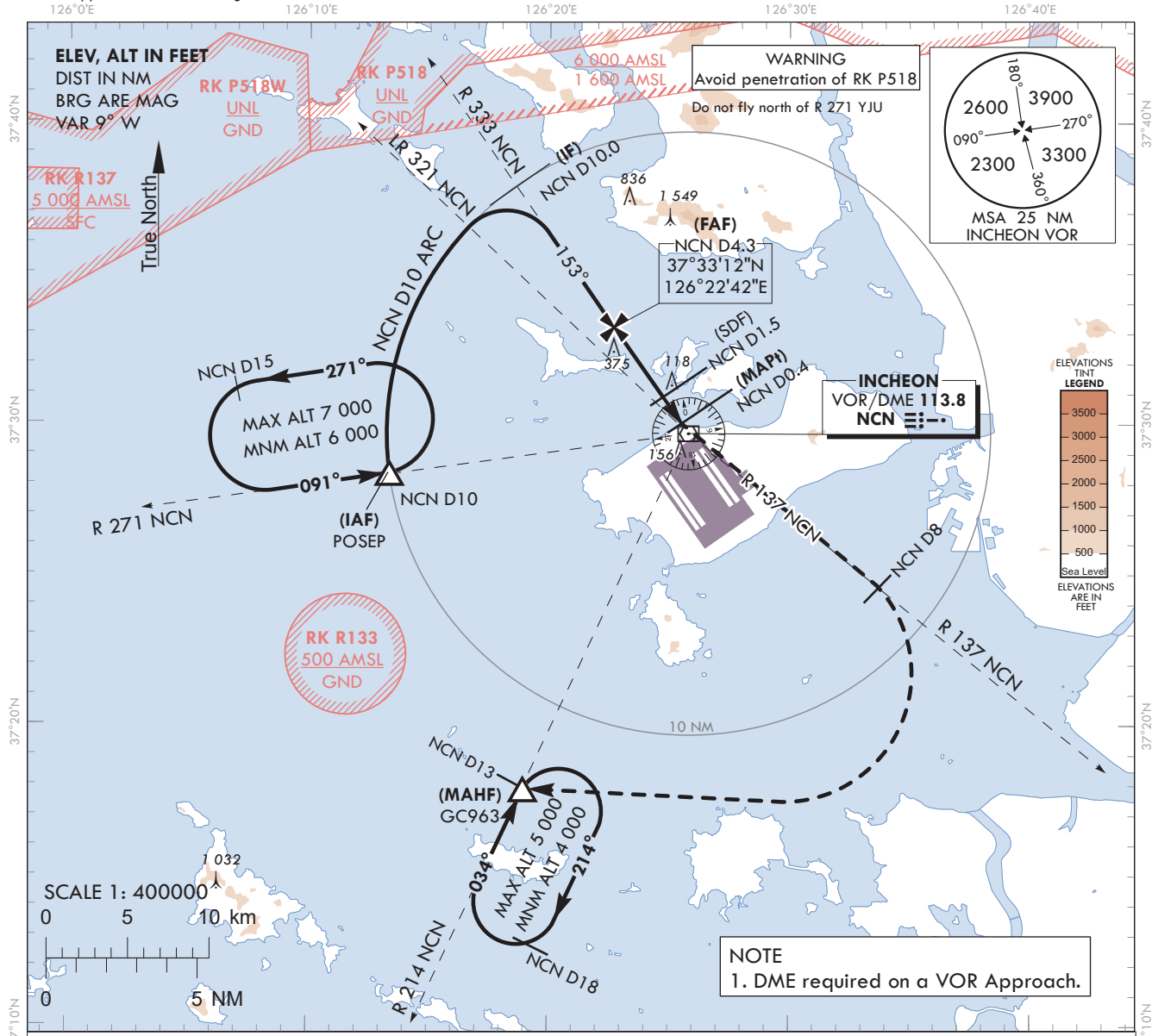
AERODROME ELEV 23 ft
HEIGHTS RELATED TO
THR RWY 15L - ELEV 23 ft

SEOUL APP	119.75
	121.35
INCHEON TWR	118.2
	118.8

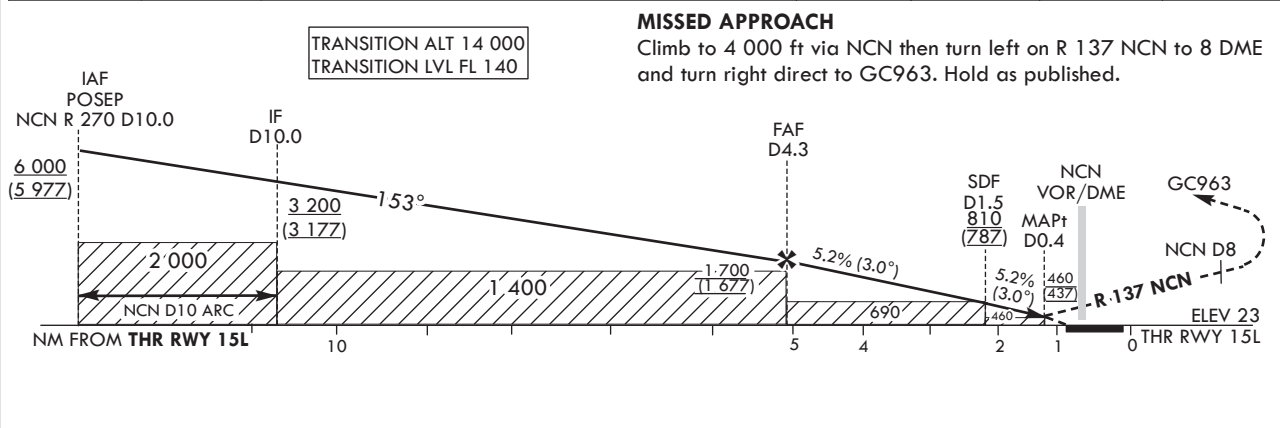
SEOUL/Incheon Intl(RKSI)

VOR RWY 15L

Note : Approach under ICAO Flight Procedures.



RECOMMENDED DESCENT PROFILE	DME NCN	3	2	1
Final Approach Gradient 5.2%(317.9 ft/NM) to SDF, 5.2%(318.3 ft/NM) to THR	ALT(HGT)	1 287(1 264)	969(946)	650(627)



CATEGORY	FULL	ALS INOP	MDA(MDH)	A				Knots	60	90	120	150	180	
				A	B	C	D							
Straight-in	FULL		460 (437)	1 300m				Rate of descent	V/V fpm	318	477	636	795	954
	ALS INOP			2 000m										

* Timing Not authorized for defining MAPt.
* Circling Not authorized.

Change : Information of ALT restriction for holding procedure.

SEOUL/Incheon Intl(RKSI)
VOR RWY 15L

AERONAUTICAL DATA TABULATION

VOR Approach to RWY 15L from POSEP			
Fix / Point		Coordinates	
POSEP(IAF)		37°28'21.8"N	126°13'22.0"E
D10 NCN(IF)	BRG 153.45°/10.00 NM NCN	37°37'52.4"N	126°18'33.7"E
D4.3 NCN(FAF)	BRG 153.45°/4.30 NM NCN	37°33'12.4"N	126°22'42.4"E
D1.5 NCN(SDF)	BRG 153.45°/1.50 NM NCN	37°30'55.0"N	126°24'44.2"E
D0.4 NCN(MAPt)	BRG 153.45°/0.40 NM NCN	37°30'01.0"N	126°25'32.1"E
NCN VOR/DME		37°29'41.7"N	126°25'49.2"E
THR RWY 15L	Final approach descent angle 2.99°(FAF - SDF)/3.00°(SDF - THR)	37°29'02.20"N	126°26'24.56"E
D8 NCN	R 137 NCN/8.00 NM NCN	37°24'40.1"N	126°33'39.1"E
GC963	BRG 213.53°/13.00 NM NCN	37°17'53.0"N	126°18'58.0"E

**INSTRUMENT
APPROACH
CHART - ICAO**

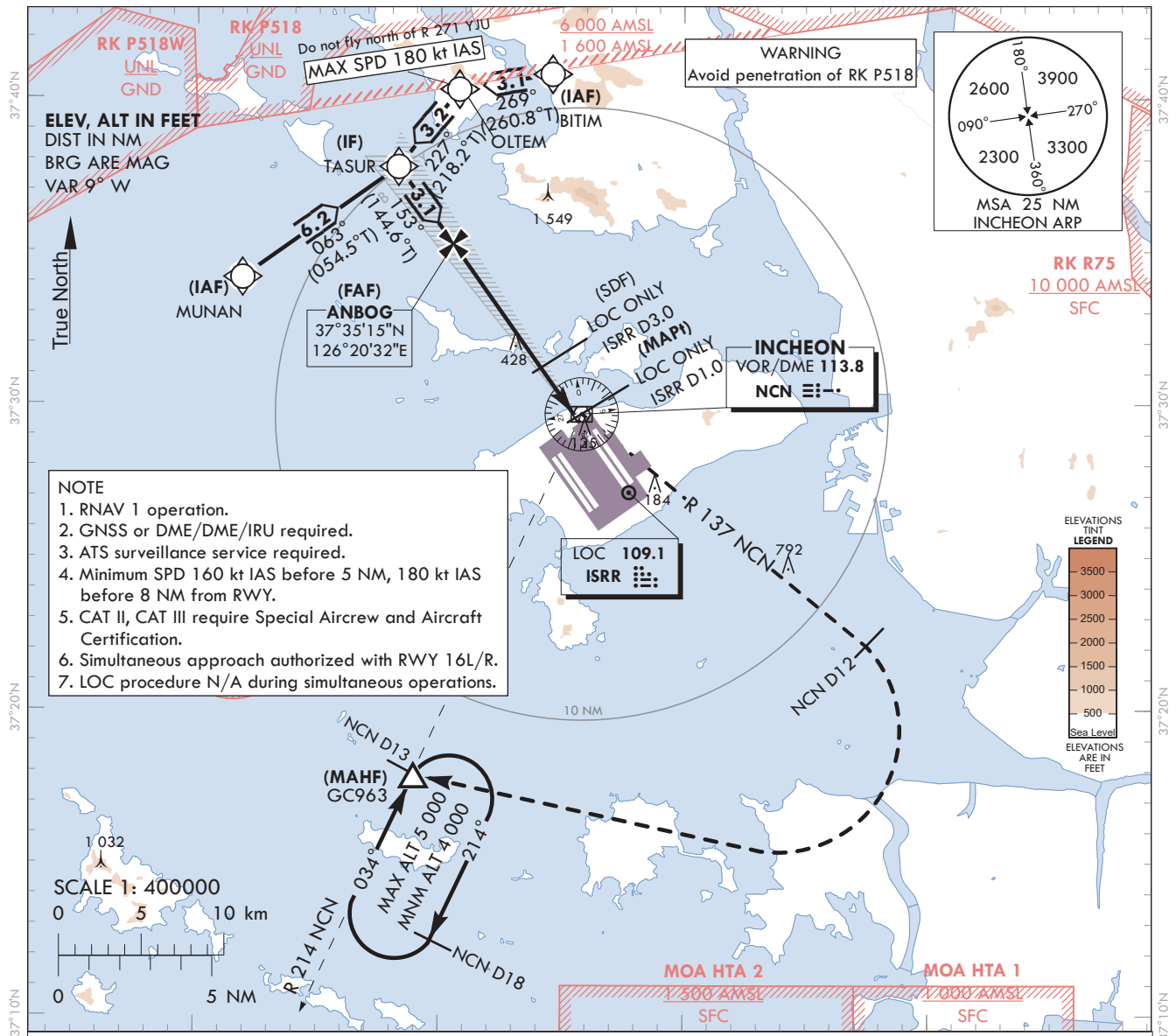
Note : Approach under ICAO Flight Procedures.

AERODROME ELEV 23 ft
HEIGHTS RELATED TO
THR RWY 15R - ELEV 23 ft

SEOUL APP	119.75
	121.35
INCHEON TWR	118.2
	118.8

SEOUL/Incheon Intl(RKSI)

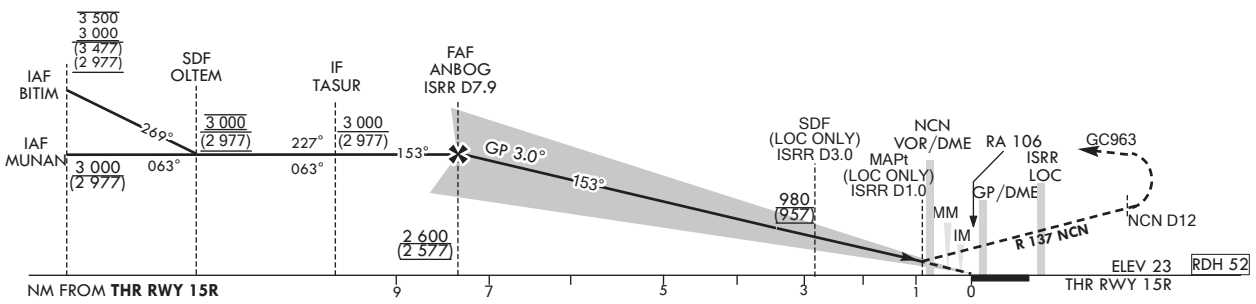
ILS Z or LOC Z RWY 15R
CAT II & III



- NOTE**
1. RNAV 1 operation.
 2. GNSS or DME/DME/IRU required.
 3. ATS surveillance service required.
 4. Minimum SPD 160 kt IAS before 5 NM, 180 kt IAS before 8 NM from RWY.
 5. CAT II, CAT III require Special Aircrew and Aircraft Certification.
 6. Simultaneous approach authorized with RWY 16L/R.
 7. LOC procedure N/A during simultaneous operations.

TRANSITION ALT 14 000
TRANSITION LVL FL 140

RECOMMENDED PROFILE		DME ISRR	7	6	5	4	3	2
Final Approach Gradient 5.37%, 326 ft/NM	ALT(HGT)		2 306 (2 283)	1 980 (1 957)	1 653 (1 630)	1 327 (1 304)	1 001 (978)	674 (651)



CATEGORY	DA(DH)/MDA(MDH)	A	B	C	D	
						Full
Straight-in	CAT-I	223 (200)	RVR 550 m, VIS 800 m			
		370 (347)	1 200 m			
	CAT II	123 (100)	300 m		300 m ¹⁾ / 350 m	
		CAT III	-	75 m ²⁾ / 125 m		

MISSED APPROACH
Climb to 520 ft on RWY HDG then turn left to intercept and follow R 137 NCN to 12 DME, continue climb to 4 000 ft turn right direct to GC963. Hold as published. Do not turn before passing MAPt.

1) For CAT D aeroplane conducting an autoland.
2) Aeroplane use Fail-operational system.

* Timing Not authorized for defining MAPt.
* Circling Not authorized.

SEOUL/Incheon Intl(RKSI)
ILS Z or LOC Z RWY 15R
CAT II & III

AERONAUTICAL DATA TABULATION

ILS Z/LOC Z Approach to RWY 15R from MUNAN to TASUR(IF)	
Fix / Point	Coordinates
MUNAN(IAF)	37°34'09.3"N 126°11'53.0"E
TASUR(IF)	37°37'46.4"N 126°18'16.2"E

ILS Z/LOC Z Approach to RWY 15R from BITIM to TASUR(IF)	
Fix / Point	Coordinates
BITIM(IAF)	37°40'48.0"N 126°24'36.1"E
OLTEM(SDF)	37°40'18.2"N 126°20'46.3"E
TASUR(IF)	37°37'46.4"N 126°18'16.2"E

ILS Z/LOC Z Approach to RWY 15R from TASUR(IF) to MAHF	
Fix / Point	Coordinates
ANBOG(FAF) BRG 153.15°/7.92 NM ISRR	37°35'14.6"N 126°20'31.9"E
D3.0 ISRR (SDF LOC ONLY) BRG 153.15°/3.00 NM ISRR	37°31'13.4"N 126°24'07.1"E
D1.0 ISRR (MAPt LOC ONLY) BRG 153.15°/1.00 NM ISRR	37°29'34.5"N 126°25'35.2"E
NCN VOR/DME	37°29'41.7"N 126°25'49.2"E
THR RWY 15R	37°28'54.44"N 126°26'10.82"E
ISRR DME	37°28'48.7"N 126°26'21.9"E
Climb to 520 ft HDG 153	-
D12 NCN R 137 NCN/12.00 NM NCN	37°22'06.2"N 126°37'29.9"E
GC963 BRG 213.53°/13.00 NM NCN	37°17'53.0"N 126°18'58.0"E

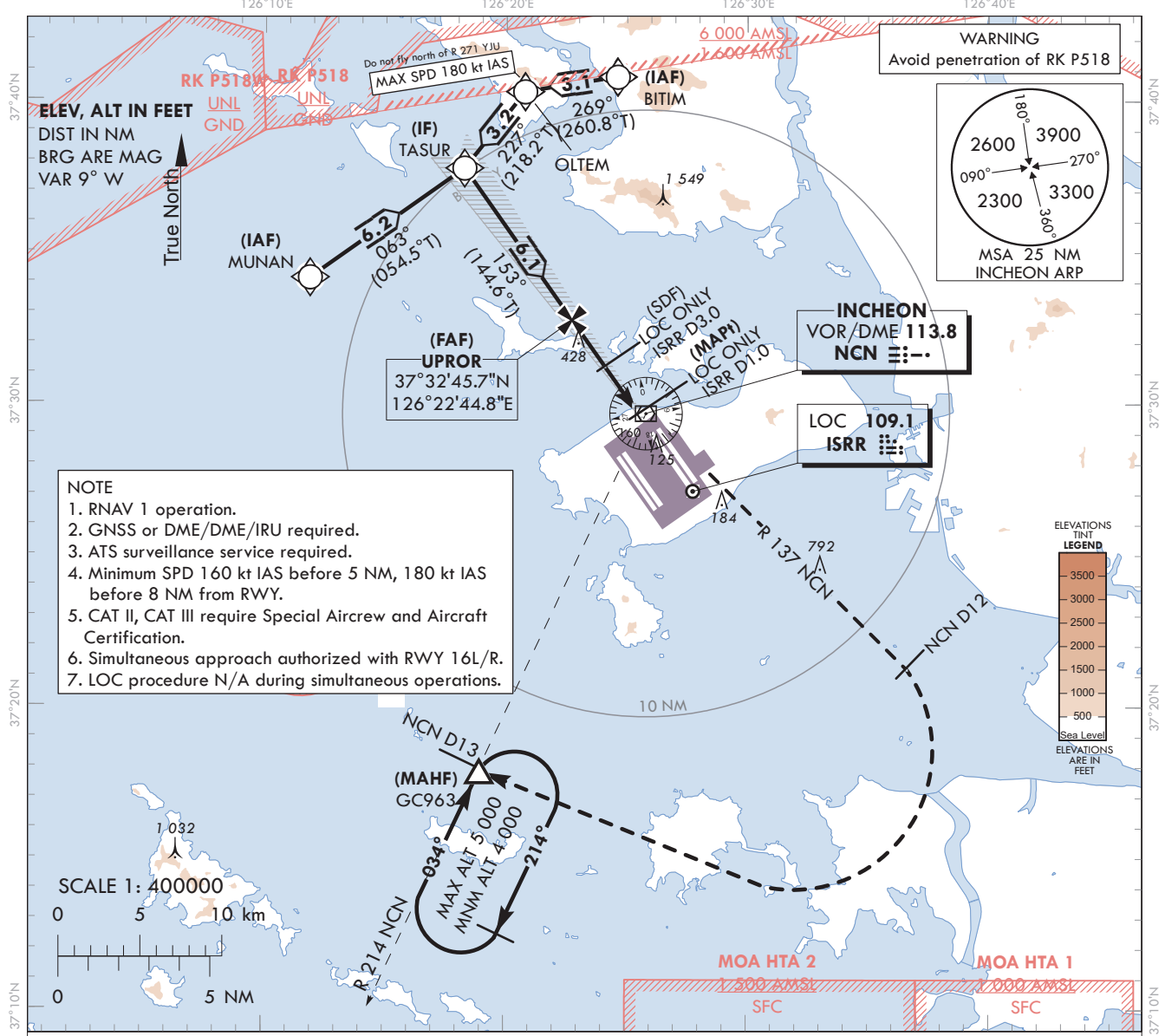
**INSTRUMENT
APPROACH
CHART - ICAO**

AERODROME ELEV 23 ft
HEIGHTS RELATED TO
THR RWY 15R - ELEV 23 ft

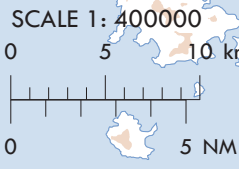
SEOUL APP	119.75
	121.35
INCHEON TWR	118.2
	118.8

SEOUL/Incheon Intl(RKSI)
ILS Y or LOC Y RWY 15R
CAT II & III

Note : Approach under ICAO Flight Procedures.

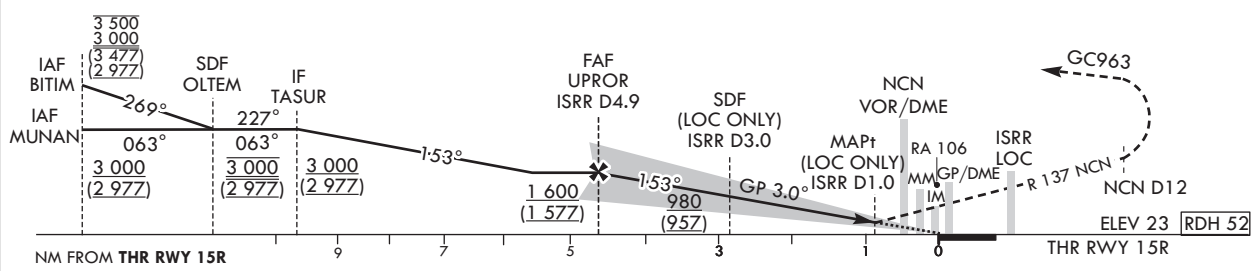


- NOTE**
1. RNAV 1 operation.
 2. GNSS or DME/DME/IRU required.
 3. ATS surveillance service required.
 4. Minimum SPD 160 kt IAS before 5 NM, 180 kt IAS before 8 NM from RWY.
 5. CAT II, CAT III require Special Aircrew and Aircraft Certification.
 6. Simultaneous approach authorized with RWY 16L/R.
 7. LOC procedure N/A during simultaneous operations.



TRANSITION ALT 14 000
TRANSITION LVL FL 140

RECOMMENDED PROFILE		DME ISRR	4	3	2
Final Approach Gradient 5.30%, 322 ft/NM		ALT(HGT)	1 310 (1 287)	982 (959)	666 (643)



CATEGORY		DA(DH)/MDA(MDH)	A	B	C	D
Straight-in	CAT-I	FULL	223	RVR 550 m, VIS 800 m		
		ALS INOP	(200)	1 200 m		
	LOC	FULL	370	900 m		
		ALS INOP	(347)	1 600 m		
CAT II		123(100)	300 m		300 m ¹⁾ / 350 m	
CAT III		-	75 m ²⁾ / 125 m			

MISSED APPROACH
Climb to 520 ft on RWY HDG then turn left to intercept and follow R 137 NCN to 12 DME, continue climb to 4 000 ft turn right direct to GC963. Hold as published. Do not turn before passing MAPt.

1) For CAT D aeroplane conducting an autoland.
2) Aeroplane use Fail-operational system.

* Timing Not authorized for defining MAPt.
* Circling Not authorized.

SEOUL/Incheon Intl(RKSI)
ILS Y or LOC Y RWY 15R
CAT II & III

AERONAUTICAL DATA TABULATION

ILS Y/LOC Y Approach to RWY 15R from MUNAN to TASUR(IF)	
Fix / Point	Coordinates
MUNAN(IAF)	37°34'09.3"N 126°11'53.0"E
TASUR(IF)	37°37'46.4"N 126°18'16.2"E

ILS Y/LOC Y Approach to RWY 15R from BITIM to TASUR(IF)	
Fix / Point	Coordinates
BITIM(IAF)	37°40'48.0"N 126°24'36.1"E
OLTEM(SDF)	37°40'18.2"N 126°20'46.3"E
TASUR(IF)	37°37'46.4"N 126°18'16.2"E

ILS Y/LOC Y Approach to RWY 15R from TASUR(IF) to MAHF	
Fix / Point	Coordinates
UPROR(FAF) BRG 153.15°/4.89 NM ISRR	37°32'45.7"N 126°22'44.8"E
D3.0 ISRR (SDF LOC ONLY) BRG 153.15°/3.00 NM ISRR	37°31'13.4"N 126°24'07.1"E
D1.0 ISRR (MAPt LOC ONLY) BRG 153.15°/1.00 NM ISRR	37°29'35.3"N 126°25'34.4"E
NCN VOR/DME	37°29'41.7"N 126°25'49.2"E
THR RWY 15R	37°28'54.44"N 126°26'10.82"E
ISRR DME	37°28'48.7"N 126°26'21.9"E
Climb to 520 ft HDG 153	-
D12 NCN R 137 NCN/12.00 NM NCN	37°22'06.2"N 126°37'29.9"E
GC963 BRG 213.53°/13.00 NM NCN	37°17'53.0"N 126°18'58.0"E

**INSTRUMENT
APPROACH
CHART - ICAO**

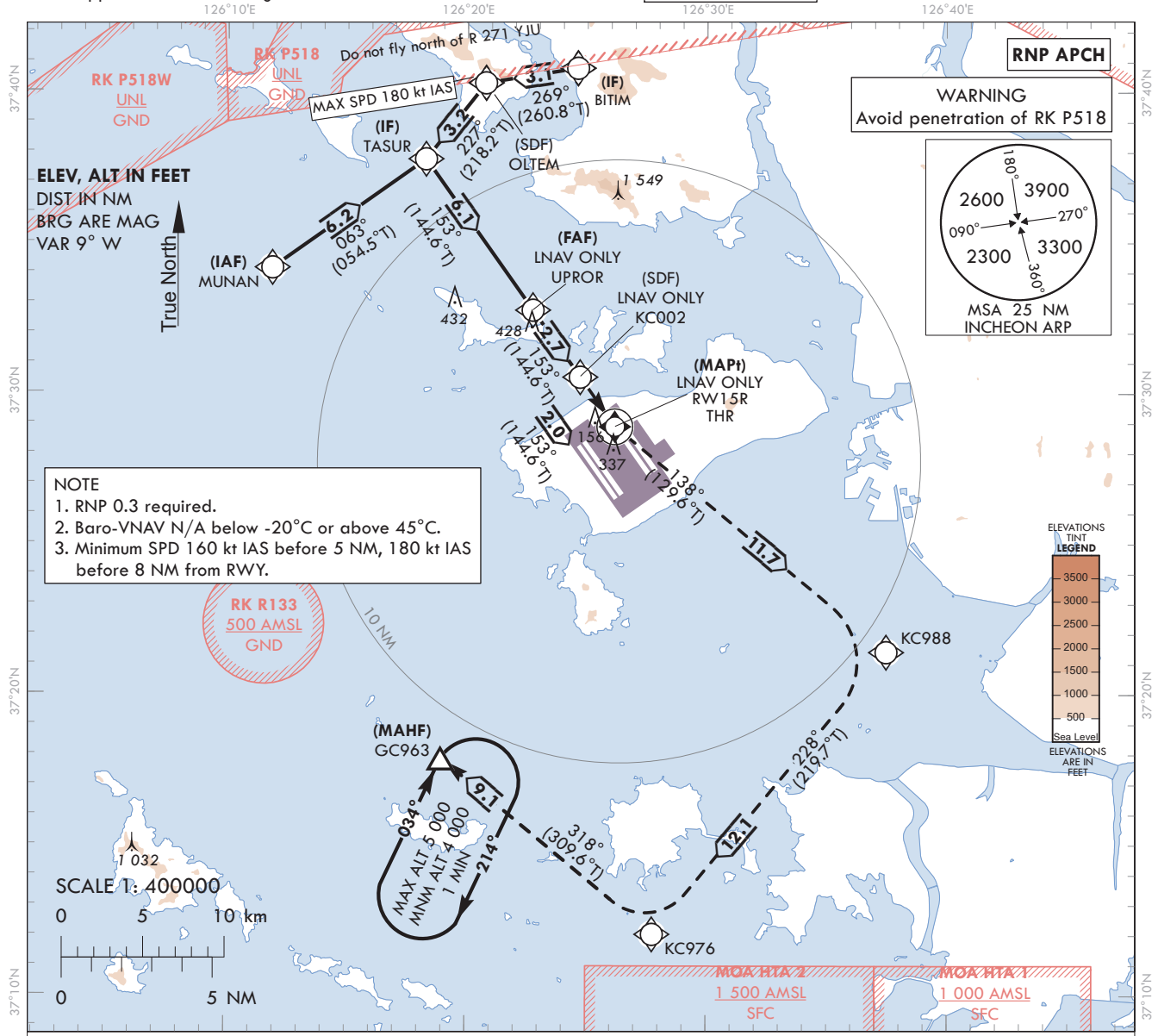
AERODROME ELEV 23 ft
HEIGHTS RELATED TO
THR RWY 15R - ELEV 23 ft

SEOUL APP	119.75
	121.35
INCHEON TWR	118.2
	118.8

SEOUL/Incheon Intl(RKSI)

RNP RWY 15R

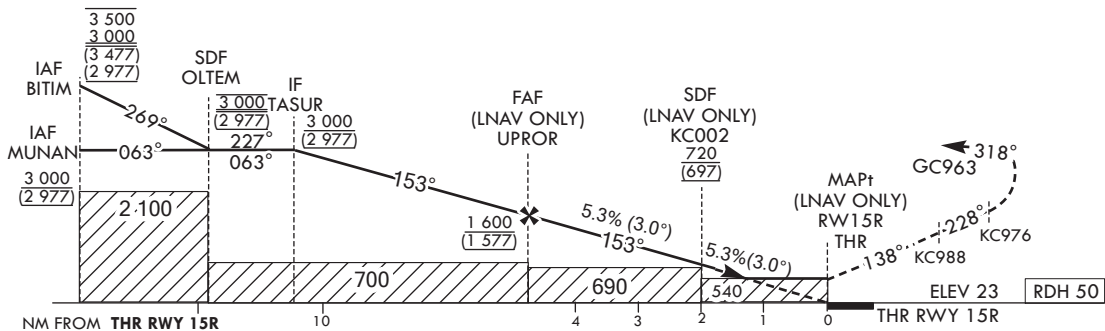
Note : Approach under ICAO Flight Procedures.



TRANSITION ALT 14 000
TRANSITION LVL FL 140

MISSED APPROACH

Climb to 4 000 ft. Track to KC988, KC976 and GC963. Hold as published.



CATEGORY		DA(H)/MDA(H)	A	B	C	D	Knots	60	90	120	150	180
STA	LNAV	FULL		1 600 m			Rate of descent V/V fpm	324	485	647	809	971
		ALS INOP	540 (517)	2 400 m								
	LNAV/VNAV	FULL	430	1 200 m								
		ALS INOP	(407)	1 900 m								

* Timing Not authorized for defining MAPt.
* Circling Not authorized.

Change : Improved clarity such as terrain.

AERONAUTICAL DATA TABULATION

Instrument Approach Procedure Coding Tables

RNP RWY 15R - via MUNAN(IAF) to GC963(MAHF)

Serial Number	Path Descriptor	Waypoint Identifier	Fly-over	Course/Track °M(°T)	Distance (NM)	Turn direction	Altitude (ft)	Speed (kt)	Coordinates	VPA/RDH	Navigation specification	Remarks
001	IF	MUNAN	-	-	-	-	+3 000	-	37°34'09.3"N 126°11'53.0"E	-	RNP APCH	IAF
002	TF	TASUR	-	063 (054.5)	6.2	-	+3 000	-	37°37'46.4"N 126°18'16.2"E	-	RNP APCH	IF
003	TF	UPROR	-	153 (144.6)	6.1	-	+1 600	-	37°32'45.7"N 126°22'44.8"E	-	RNP APCH	FAF
004	TF	KC002	-	153 (144.6)	2.7	-	+720	-	37°30'32.4"N 126°24'43.6"E	-	RNP APCH	SDF
005	TF	RW15R	Y	153 (144.6)	2.0	-	+540	-	37°28'54.44"N 126°26'10.82"E	-3.05/50	RNP APCH	MAPt
006	TF	KC988	-	138 (129.6)	11.7	-	-	-	37°21'25.5"N 126°37'29.3"E	-	RNP APCH	-
007	TF	KC976	-	228 (219.7)	12.1	-	-	-	37°12'03.9"N 126°27'45.9"E	-	RNP APCH	-
008	TF	GC963	Y	318 (309.6)	9.1	-	+4 000	-	37°17'53.0"N 126°18'58.0"E	-	RNP APCH	-
009	HM	GC963	Y	034 (025.0)	-	R	-5 000 +4 000	-	37°17'53.0"N 126°18'58.0"E	-	RNP APCH	1 min (Outbound timing)

RNP RWY 15R - via BITIM(IAF) to GC963(MAHF)

Serial Number	Path Descriptor	Waypoint Identifier	Fly-over	Course/Track °M(°T)	Distance (NM)	Turn direction	Altitude (ft)	Speed (kt)	Coordinates	VPA/RDH	Navigation specification	Remarks
001	IF	BITIM	-	-	-	-	-3 500 +3 000	-	37°40'48.0"N 126°24'36.1"E	-	RNP APCH	IAF
002	TF	OLTEM	-	269 (260.8)	3.1	-	@3 000	-180	37°40'18.2"N 126°20'46.3"E	-	RNP APCH	SDF
003	TF	TASUR	-	227 (218.2)	3.2	-	+3 000	-	37°37'46.4"N 126°18'16.2"E	-	RNP APCH	IF
004	TF	UPROR	-	153 (144.6)	6.1	-	+1 600	-	37°32'45.7"N 126°22'44.8"E	-	RNP APCH	FAF
005	TF	KC002	-	153 (144.6)	2.7	-	+720	-	37°30'32.4"N 126°24'43.6"E	-	RNP APCH	SDF
006	TF	RW15R	Y	153 (144.6)	2.0	-	+540	-	37°28'54.44"N 126°26'10.82"E	-3.05/50	RNP APCH	MAPt
007	TF	KC988	-	138 (129.6)	11.7	-	-	-	37°21'25.5"N 126°37'29.3"E	-	RNP APCH	-
008	TF	KC976	-	228 (219.7)	12.1	-	-	-	37°12'03.9"N 126°27'45.9"E	-	RNP APCH	-
009	TF	GC963	Y	318 (309.6)	9.1	-	+4 000	-	37°17'53.0"N 126°18'58.0"E	-	RNP APCH	-
010	HM	GC963	Y	034 (025.0)	-	R	-5 000 +4 000	-	37°17'53.0"N 126°18'58.0"E	-	RNP APCH	1 min (Outbound timing)

**INSTRUMENT
APPROACH
CHART - ICAO**

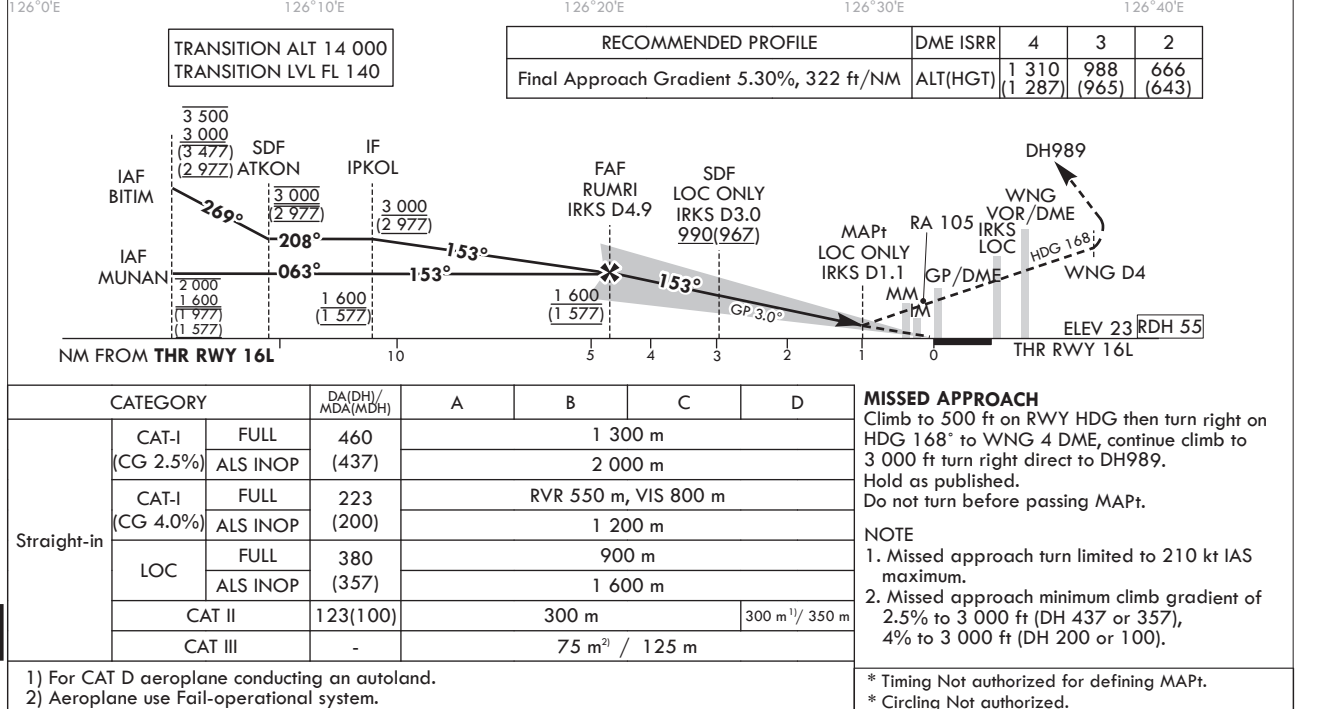
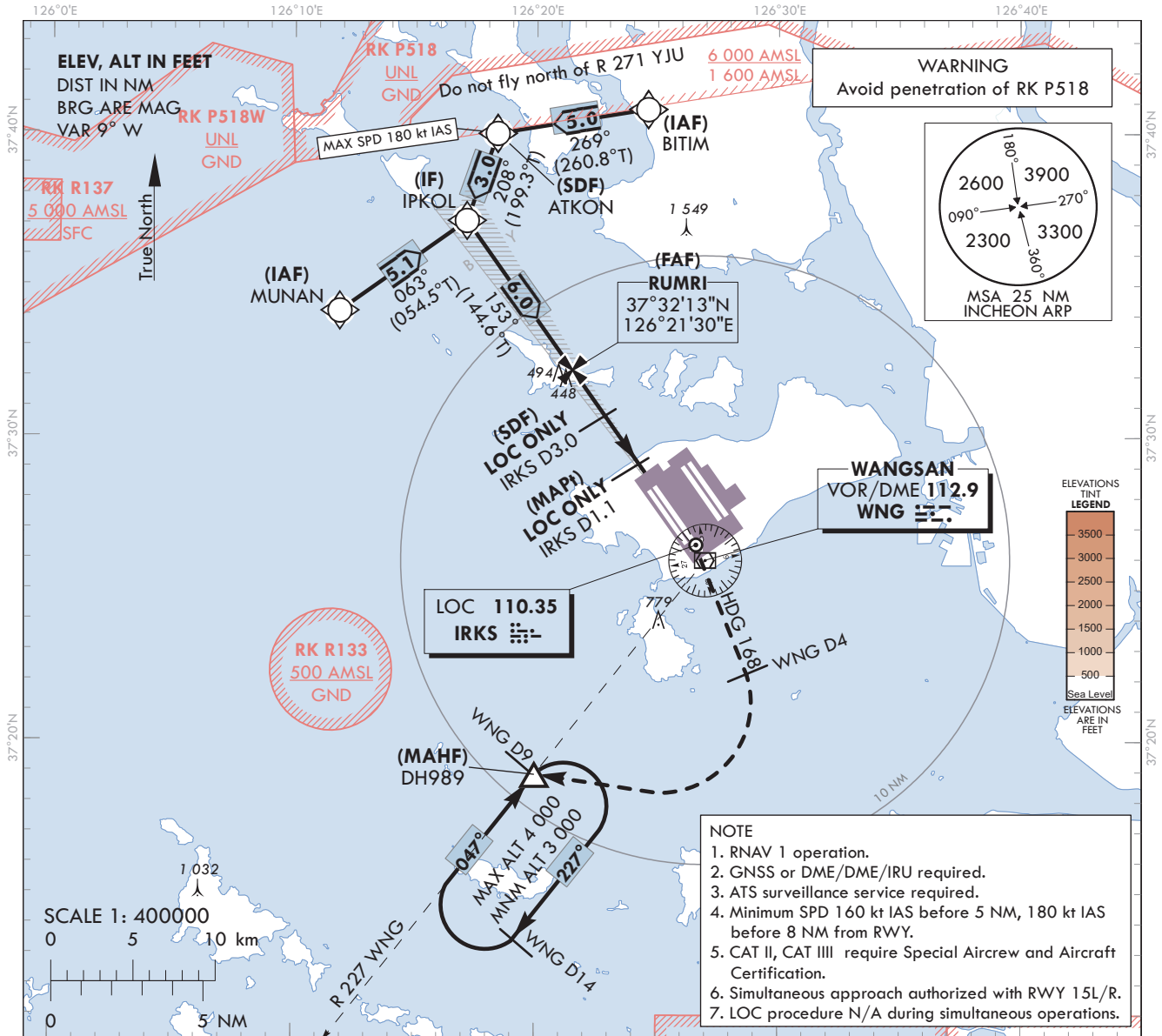
AERODROME ELEV 23 ft
HEIGHTS ELEV TO
THR RWY 16L - ELEV 23 ft

SEOUL APP 119.75
121.35
INCHEON TWR 118.2
118.8

SEOUL/Incheon Intl(RKSI)

**ILS or LOC RWY 16L
CAT II & III**

Note : Approach under ICAO Flight Procedures.



Change : Amended phrase.

SEOUL/Incheon Intl(RKSI)
ILS or LOC RWY 16L
CAT II & III

AERONAUTICAL DATA TABULATION

ILS/LOC Approach to RWY 16L from MUNAN to IPKOL(IF)		
Fix / Point	Coordinates	
MUNAN(IAF)	37°34'09.3"N	126°11'53.0"E
IPKOL(IF)	37°37'07.4"N	126°17'07.3"E

ILS/LOC Approach to RWY 16L from BITIM to IPKOL(IF)		
Fix / Point	Coordinates	
BITIM(IAF)	37°40'48.0"N	126°24'36.1"E
ATKON(SDF)	37°39'59.6"N	126°18'23.2"E
IPKOL(IF)	37°37'07.4"N	126°17'07.3"E

ILS/LOC Approach to RWY 16L from IPKOL(IF) to MAHF		
Fix / Point	Coordinates	
RUMRI(FAF)	BRG 153.16°/4.89 NM IRKS	37°32'12.9"N 126°21'30.4"E
D3.0 IRKS(SDF) (LOC ONLY)	BRG 153.16°/3.00 NM IRKS	37°30'40.6"N 126°22'52.7"E
D1.1 IRKS(MAPt) (LOC ONLY)	BRG 153.16°/1.10 NM IRKS	37°29'07.6"N 126°24'15.6"E
THR RWY 16L		37°28'22.11"N 126°24'56.05"E
IRKS DME		37°28'11.4"N 126°24'59.7"E
WNG VOR/DME		37°25'58.6"N 126°27'00.0"E
Climb to 500 ft	HDG 153	-
D4 WNG	HDG 168	-
DH989	BRG 227.09°/9.00 NM WNG	37°18'55.0"N 126°19'59.0"E

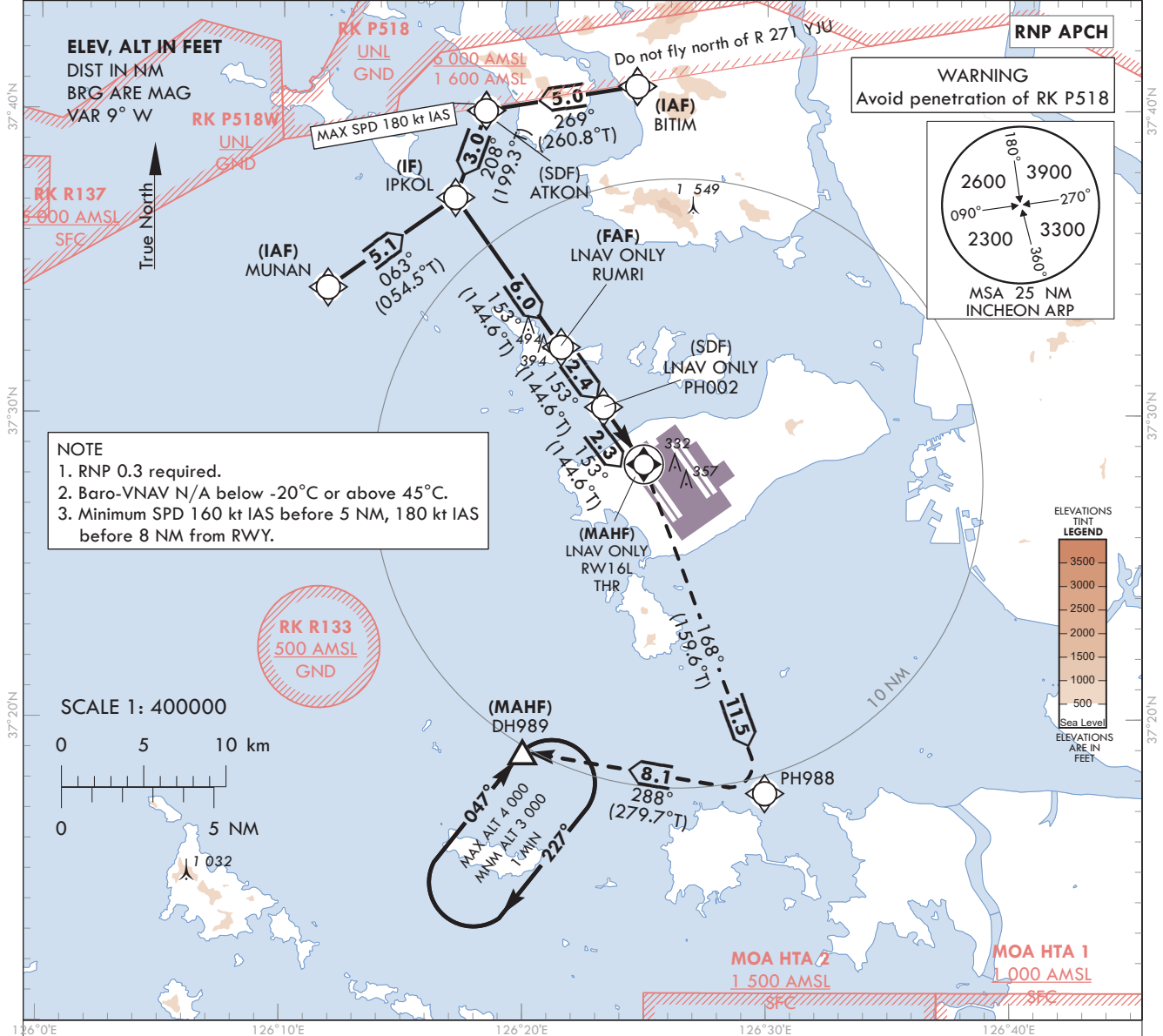
**INSTRUMENT
APPROACH
CHART - ICAO**

AERODROME ELEV 23 ft
HEIGHTS RELATED TO
THR RWY 16L - ELEV 23 ft

SEOUL APP 119.75
121.35
INCHEON TWR 118.2
118.8

SEOUL/Incheon Intl(RKSI)
RNP RWY 16L

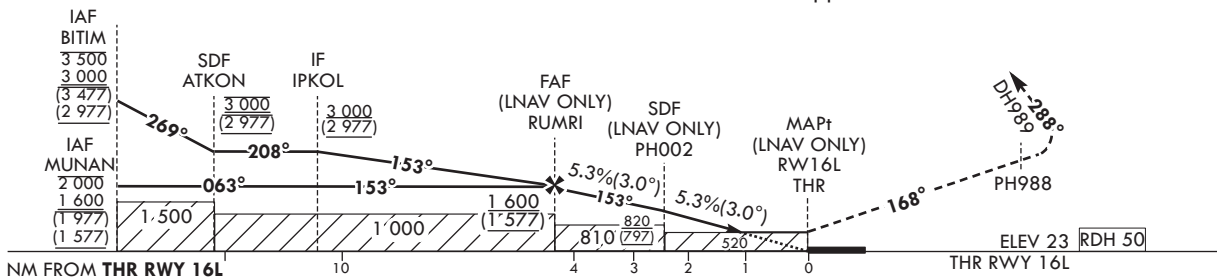
Note : Approach under ICAO Flight Procedures.
126°0'E 126°10'E 126°20'E 126°30'E 126°40'E



TRANSITION ALT 14 000
TRANSITION LVL FL 140

MISSED APPROACH
Climb to 3 000 ft. Track to PH988 and DH989.
Hold as published.

NOTE
1. Missed approach turn limited to 240 kt IAS maximum.



CATEGORY		DA(H)/MDA(H)	A	B	C	D	Knots						
STA	LNAV	FULL	520	1 500 m			Rate of descent	V/V fpm	324	486	648	810	972
		ALS INOP	(497)	2 300 m									
	LNAV/VNAV	FULL	430	1 200 m			* Timing Not authorized for defining MAPt. * Circling Not authorized.						
		ALS INOP	(407)	1 900 m									

Change : Amended phrase(RWY 16L → RW16L).

AERONAUTICAL DATA TABULATION

Instrument Approach Procedure Coding Tables

RNP RWY 16L - via MUNAN(IAF) to DH989(MAHF)

Serial Number	Path Descriptor	Waypoint Identifier	Fly-over	Course/Track °M(°T)	Distance (NM)	Turn direction	Altitude (ft)	Speed (kt)	Coordinates	VPA/RDH	Navigation specification	Remarks
001	IF	MUNAN	-	-	-	-	-2 000 +1 600	-	37°34'09.3"N 126°11'53.0"E	-	RNP APCH	IAF
002	TF	IPKOL	-	063 (054.5)	5.1	-	+1 600	-	37°37'07.4"N 126°17'07.3"E	-	RNP APCH	IF
003	TF	RUMRI	-	153 (144.6)	6.0	-	+1 600	-	37°32'12.9"N 126°21'30.4"E	-	RNP APCH	FAF
004	TF	PH002	-	153 (144.6)	2.4	-	+820	-	37°30'14.8"N 126°23'15.7"E	-	RNP APCH	SDF
005	TF	RW16L	Y	153 (144.6)	2.3	-	+520	-	37°28'22.1"N 126°24'56.06"E	-3.05/50	RNP APCH	MAPt
006	TF	PH988	-	168 (159.6)	11.5	-	-	-240	37°17'34.0"N 126°29'57.5"E	-	RNP APCH	-
007	TF	DH989	Y	288 (279.7)	8.1	-	+3 000	-240	37°18'55.0"N 126°19'59.0"E	-	RNP APCH	-
008	HM	DH989	Y	047 (038.4)	-	R	-4 000 +3 000	-	37°18'55.0"N 126°19'59.0"E	-	RNP APCH	1 min (Outbound timing)

RNP RWY 16L - via BITIM(IAF) to DH989(MAHF)

Serial Number	Path Descriptor	Waypoint Identifier	Fly-over	Course/Track °M(°T)	Distance (NM)	Turn direction	Altitude (ft)	Speed (kt)	Coordinates	VPA/RDH	Navigation specification	Remarks
001	IF	BITIM	-	-	-	-	-3 500 +3 000	-	37°40'48.0"N 126°24'36.1"E	-	RNP APCH	IAF
002	TF	ATKON	-	269 (260.8)	5.0	-	@3 000	-180	37°39'59.6"N 126°18'23.2"E	-	RNP APCH	SDF
003	TF	IPKOL	-	208 (199.3)	3.0	-	+3 000	-	37°37'07.4"N 126°17'07.3"E	-	RNP APCH	IF
004	TF	RUMRI	-	153 (144.6)	6.0	-	+1 600	-	37°32'12.9"N 126°21'30.4"E	-	RNP APCH	FAF
005	TF	PH002	-	153 (144.6)	2.4	-	+820	-	37°30'14.8"N 126°23'15.7"E	-	RNP APCH	SDF
006	TF	RW16L	Y	153 (144.6)	2.3	-	+520	-	37°28'22.1"N 126°24'56.06"E	-3.05/50	RNP APCH	MAPt
007	TF	PH988	-	168 (159.6)	11.5	-	-	-240	37°17'34.0"N 126°29'57.5"E	-	RNP APCH	-
008	TF	DH989	Y	288 (279.7)	8.1	-	+3 000	-240	37°18'55.0"N 126°19'59.0"E	-	RNP APCH	-
009	HM	DH989	Y	047 (038.4)	-	R	-4 000 +3 000	-	37°18'55.0"N 126°19'59.0"E	-	RNP APCH	1 min (Outbound timing)

**INSTRUMENT
APPROACH
CHART-ICAO**

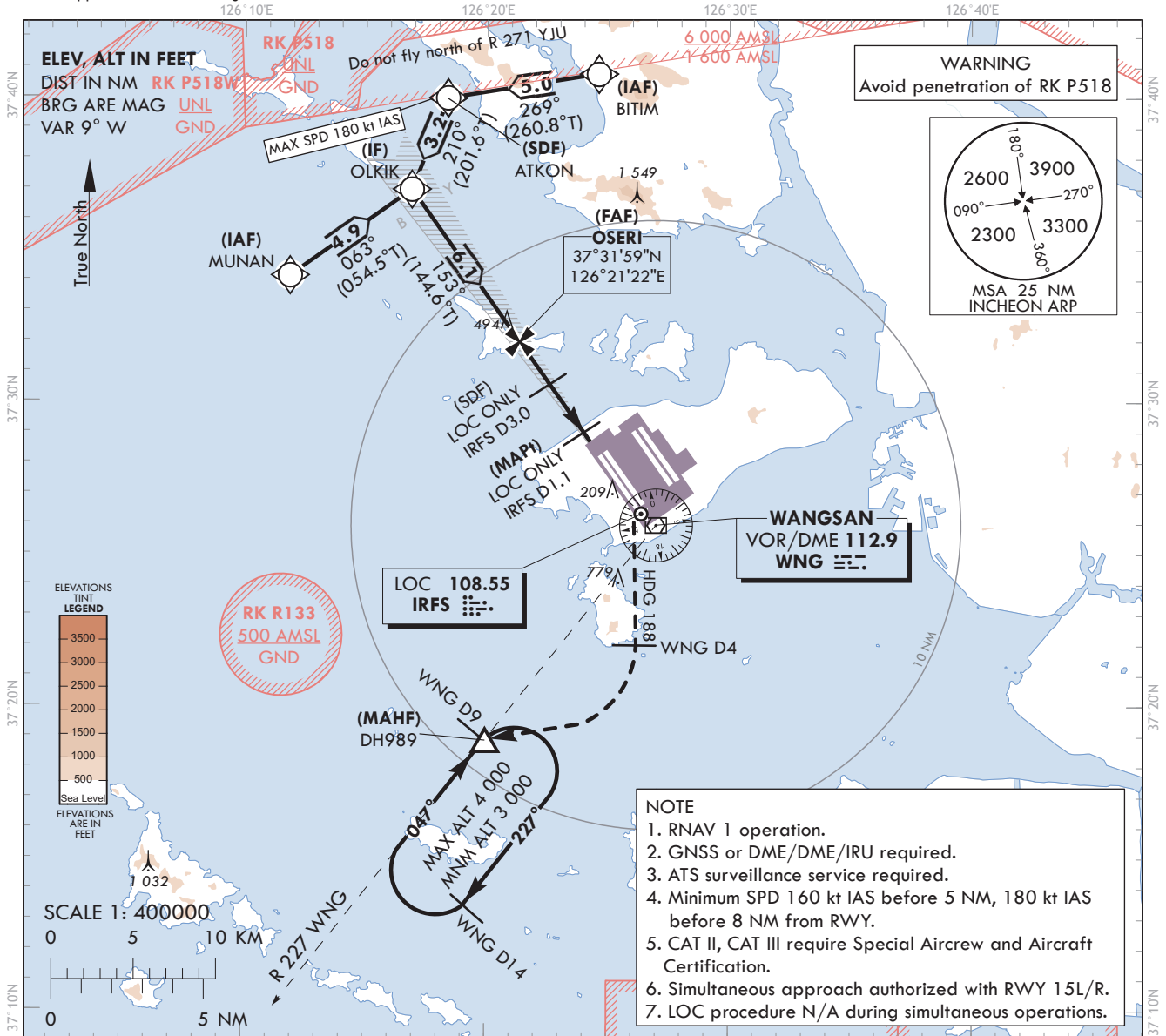
AERODROME ELEV 23 ft
HEIGHTS RELATED TO
THR RWY 16R - ELEV 23 ft

SEOUL APP	119.75
	121.35
INCHEON TWR	118.2
	118.8

SEOUL/Incheon Intl(RKSI)

**ILS or LOC RWY 16R
CAT II & III**

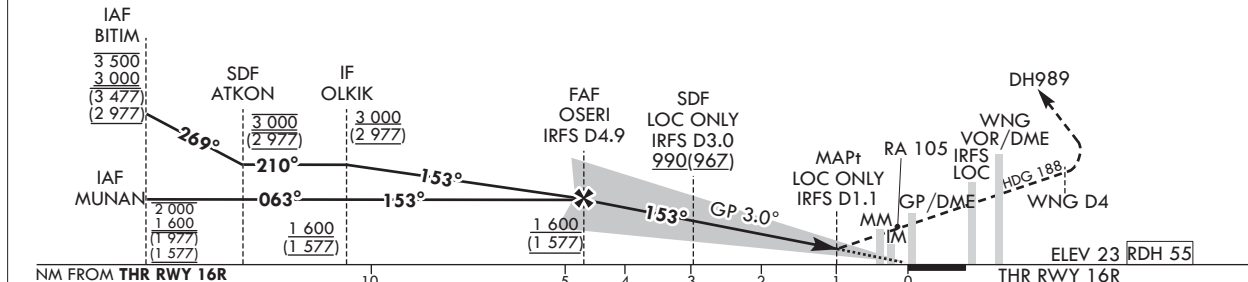
Note : Approach under ICAO Flight Procedures.



- NOTE**
1. RNAV 1 operation.
 2. GNSS or DME/DME/IRU required.
 3. ATS surveillance service required.
 4. Minimum SPD 160 kt IAS before 5 NM, 180 kt IAS before 8 NM from RWY.
 5. CAT II, CAT III require Special Aircrew and Aircraft Certification.
 6. Simultaneous approach authorized with RWY 15L/R.
 7. LOC procedure N/A during simultaneous operations.

TRANSITION ALT 14 000
TRANSITION LVL FL 140

RECOMMENDED PROFILE		DME IRFS	4	3	2
Final Approach Gradient 5.30%, 322 ft/NM	ALT(HGT)	1 310 (1 287)	988 (965)	666 (643)	



CATEGORY	DA(DH)/MDA(MDH)	A				B				C				D			
		A		B		A		B		A		B		A		B	
Straight-in	CAT-I (CG 2.5%)	FULL	460		1 300 m												
		ALS INOP	(437)		2 000 m												
	CAT-I (CG 4.0%)	FULL	223		RVR 550 m, VIS 800 m												
		ALS INOP	(200)		1 200 m												
LOC	FULL	380		900 m													
	ALS INOP	(357)		1 600 m													
CAT II	123(100)			300 m						300 m ¹⁾ / 350 m							
CAT III	-			75 m ²⁾ / 125 m													

MISSED APPROACH
Climb to 500 ft on RWY HDG then turn right on HDG 188° to WNG 4 DME, continue climb to 3 000 ft turn right direct to DH989. Hold as published. Do not turn before passing MAPt.

NOTE

1. Missed approach turn limited to 210 kt IAS maximum.
2. Missed approach minimum climb gradient of 2.5% to 3 000 ft (DH 437 or 357), 4% to 3 000 ft (DH 200 or 100).

1) For CAT D aeroplane conducting an autoland.
2) Aeroplane use Fail-operational system.

* Timing Not authorized for defining MAPt.
* Circling Not authorized.

Change : Amended phrase.

SEOUL/Incheon Intl(RKSI)
ILS or LOC RWY 16R
CAT II & III

AERONAUTICAL DATA TABULATION

ILS/LOC Approach to RWY 16R from MUNAN to OLKIK(IF)	
Fix / Point	Coordinates
MUNAN(IAF)	37°34'09.3"N 126°11'53.0"E
OLKIK(IF)	37°36'59.6"N 126°16'53.5"E

ILS/LOC Approach to RWY 16R from BITIM to OLKIK(IF)	
Fix / Point	Coordinates
BITIM(IAF)	37°40'48.0"N 126°24'36.1"E
ATKON(SDF)	37°39'59.6"N 126°18'23.2"E
OLKIK(IF)	37°36'59.6"N 126°16'53.5"E

ILS/LOC Approach to RWY 16R from OLKIK(IF) to MAHF	
Fix / Point	Coordinates
OSERI(FAF) BRG 153.16°/4.89 NM IRFS	37°31'59.0"N 126°21'22.1"E
D3.0 IRFS(SDF) (LOC ONLY) BRG 153.16°/3.00 NM IRFS	37°30'26.2"N 126°22'44.8"E
D1.1 IRFS(MAPt) (LOC ONLY) BRG 153.16°/1.10 NM IRFS	37°28'53.2"N 126°24'07.7"E
THR RWY 16R	37°28'07.71"N 126°24'48.18"E
IRFS DME	37°27'56.9"N 126°24'51.6"E
WNG VOR/DME	37°25'58.6"N 126°27'00.0"E
Climb to 500 ft HDG 153	-
D4 WNG HDG 188	-
DH989 BRG 227.09°/9.00 NM WNG	37°18'55.0"N 126°19'59.0"E

**INSTRUMENT
APPROACH
CHART - ICAO**

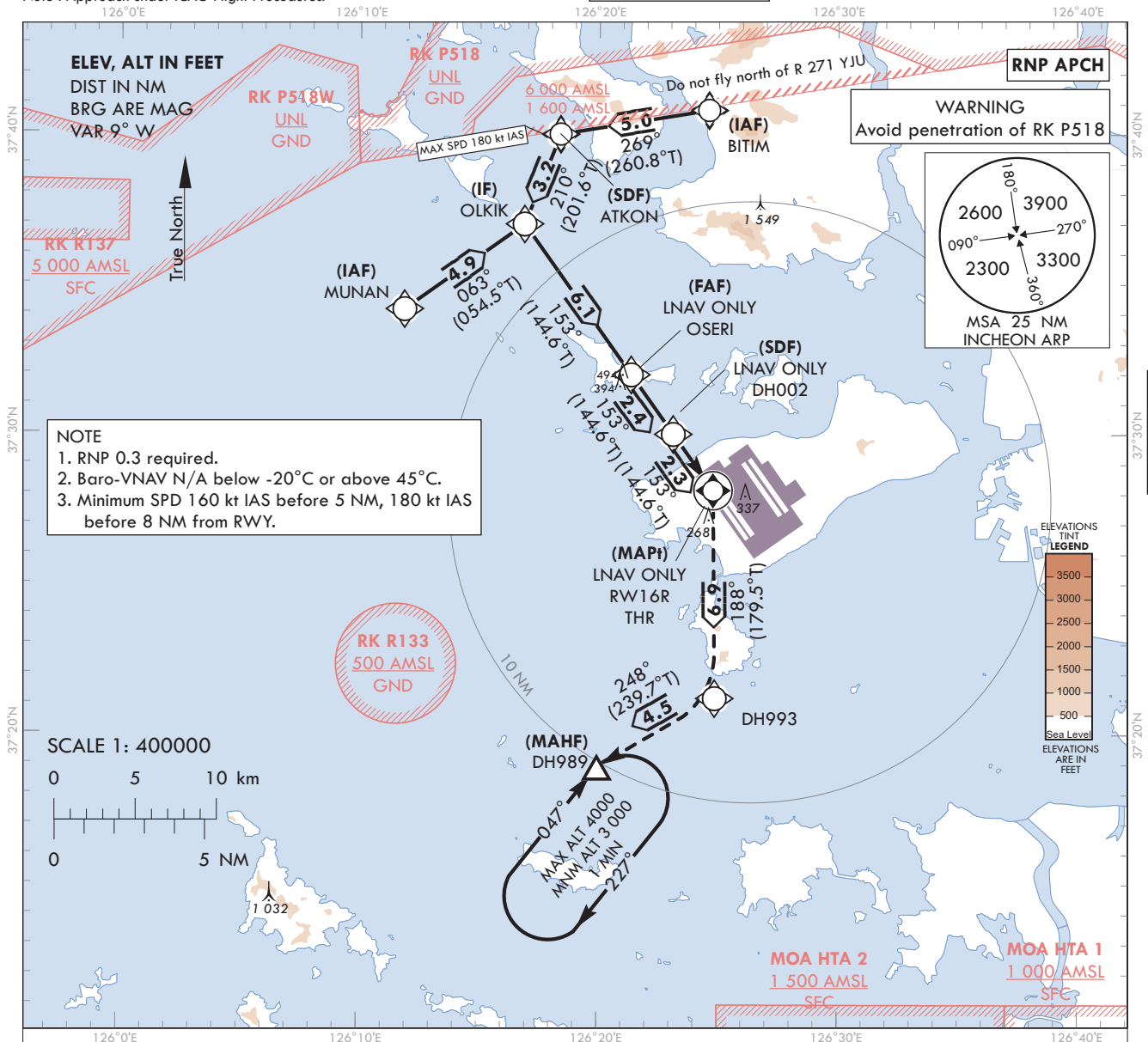
AERODROME ELEV 23 ft
HEIGHTS RELATED TO
THR RWY 16R - ELEV 23 ft

SEOUL APP	119.75
	121.35
INCHEON TWR	118.2
	118.8

SEOUL/Incheon Intl(RKSI)

RNP RWY 16R

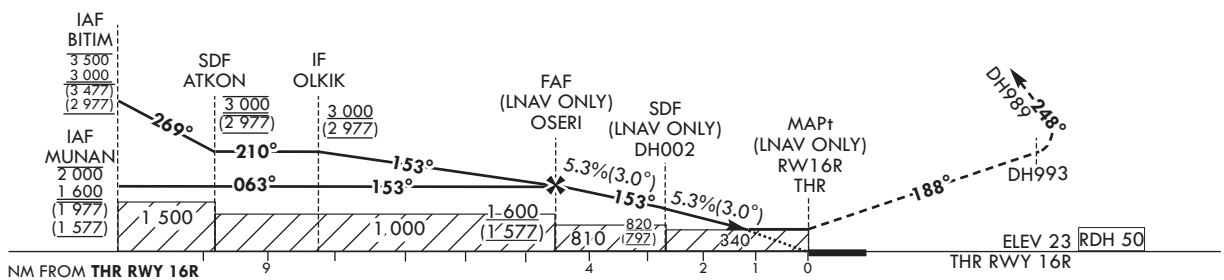
Note : Approach under ICAO Flight Procedures.



MISSED APPROACH

Climb to 3 000 ft. Track to DH993 and DH989.
Hold as published.

TRANSITION ALT 14 000
TRANSITION LVL FL 140



CATEGORY	DA(H)/MDA(H)	A	B	C	D	Rate of descent	Knots	60	90	120	150	180	
								323	485	647	809	970	
STA	LNAV	FULL	520	1 500 m			* Timing Not authorized for defining MAPt. * Circling Not authorized.	V/V fpm	323	485	647	809	970
		ALS INOP	(497)	2 300 m									
	LNAV/VNAV	FULL	430	1 200 m									
		ALS INOP	(407)	1 900 m									

Change : Amended procedure.

AERONAUTICAL DATA TABULATION

Instrument Approach Procedure Coding Tables

RNP RWY 16R - via MUNAN(IAF) to OLKIK(IF)

Serial Number	Path Descriptor	Waypoint Identifier	Fly-over	Course/Track °M(°T)	Distance (NM)	Turn direction	Altitude (ft)	Speed (kt)	Coordinates	VPA/RDH	Navigation specification	Remarks
001	IF	MUNAN	-	-	-	-	-2 000 +1 600	-	37°34'09.3"N 126°11'53.0"E	-	RNP APCH	IAF
002	TF	OLKIK	-	063 (054.5)	4.9	-	+1 600	-	37°36'59.6"N 126°16'53.5"E	-	RNP APCH	IF
003	TF	OSERI	-	153 (144.6)	6.1	-	+1 600	-	37°31'59.0"N 126°21'22.1"E	-	RNP APCH	FAF
004	TF	DH002	-	153 (144.6)	2.4	-	+820	-	37°30'00.4"N 126°23'07.8"E	-	RNP APCH	SDF
005	TF	RW16R	Y	153 (144.6)	2.3	-	+520	-	37°28'07.7"N 126°24'48.1"E	-3.05/50	RNP APCH	MAPt
006	TF	DH993	-	188 (179.5)	6.9	-	-	-	37°21'12.6"N 126°24'53.1"E	-	RNP APCH	-
007	TF	DH989	Y	248 (239.7)	4.5	-	+3 000	-	37°18'55.0"N 126°19'59.0"E	-	RNP APCH	-
008	HM	DH989	Y	047 (038.4)	-	R	-4 000 +3 000	-	37°18'55.0"N 126°19'59.0"E	-	RNP APCH	1 min (Outbound timing)

RNP RWY 16R - via BITIM(IAF) to OLKIK(IF)

Serial Number	Path Descriptor	Waypoint Identifier	Fly-over	Course/Track °M(°T)	Distance (NM)	Turn direction	Altitude (ft)	Speed (kt)	Coordinates	VPA/RDH	Navigation specification	Remarks
001	IF	BITIM	-	-	-	-	-3 500 +3 000	-	37°40'48.0"N 126°24'36.1"E	-	RNP APCH	IAF
002	TF	ATKON	-	269 (260.8)	5.0	-	@3 000	-180	37°39'59.6"N 126°18'23.2"E	-	RNP APCH	SDF
003	TF	OLKIK	-	210 (201.6)	3.2	-	+3 000	-	37°36'59.6"N 126°16'53.5"E	-	RNP APCH	IF
004	TF	OSERI	-	153 (144.6)	6.1	-	+1 600	-	37°31'59.0"N 126°21'22.1"E	-	RNP APCH	FAF
005	TF	DH002	-	153 (144.6)	2.4	-	+820	-	37°30'00.4"N 126°23'07.8"E	-	RNP APCH	SDF
006	TF	RW16R	Y	153 (144.6)	2.3	-	+520	-	37°28'07.7"N 126°24'48.1"E	-3.05/50	RNP APCH	MAPt
007	TF	DH993	-	188 (179.5)	6.9	-	-	-	37°21'12.6"N 126°24'53.1"E	-	RNP APCH	-
008	TF	DH989	Y	248 (239.7)	4.5	-	+3 000	-	37°18'55.0"N 126°19'59.0"E	-	RNP APCH	-
009	HM	DH989	Y	047 (038.4)	-	R	-4 000 +3 000	-	37°18'55.0"N 126°19'59.0"E	-	RNP APCH	1 min (Outbound timing)

**INSTRUMENT
APPROACH
CHART - ICAO**

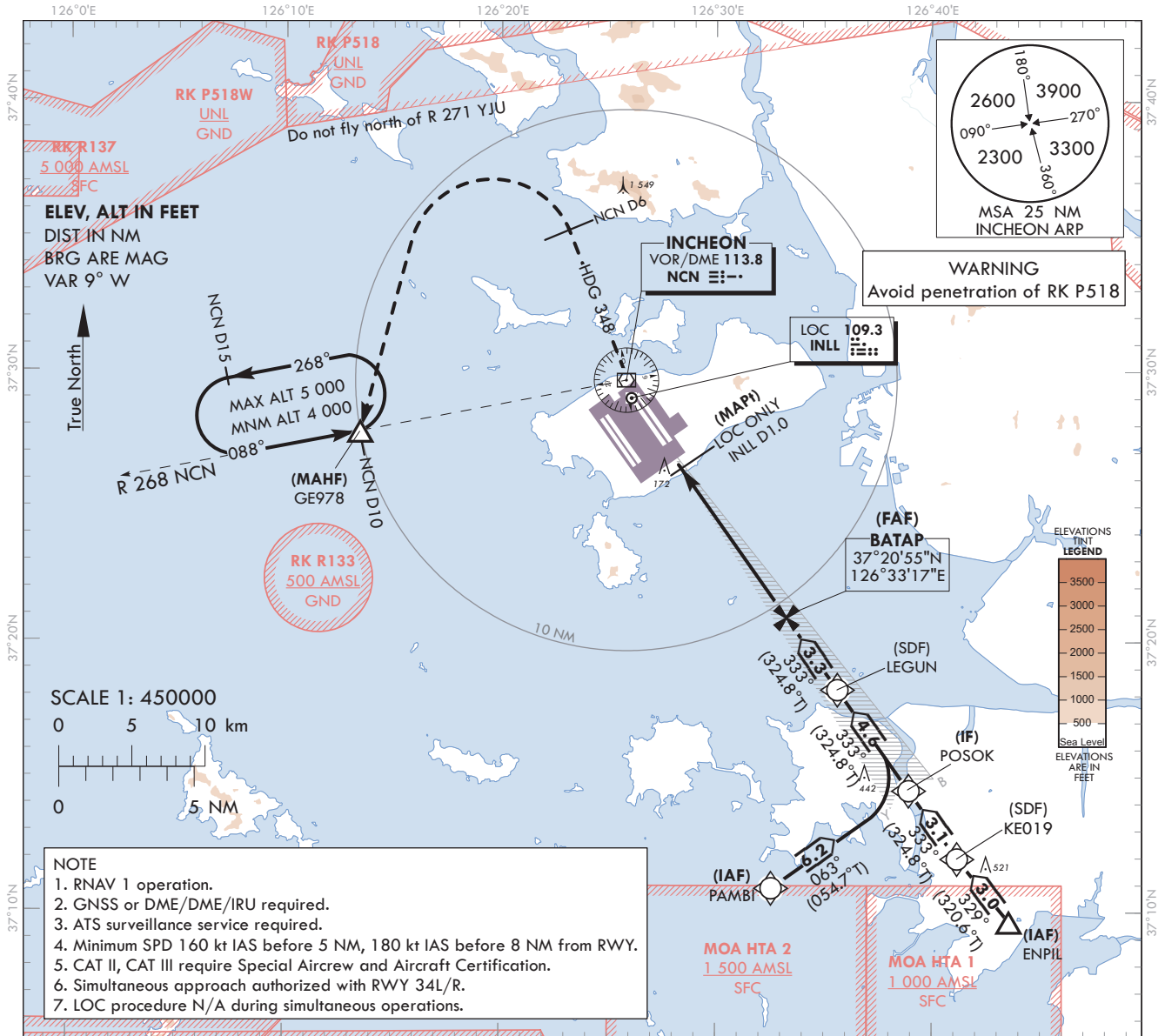
AERODROME ELEV 23 ft
HEIGHTS RELATED TO
THR RWY 33L - ELEV 23 ft

SEOUL APP 119.75
121.35
INCHEON TWR 118.2
118.8

SEOUL/Incheon Intl(RKSI)

**ILS or LOC RWY 33L
CAT II & III**

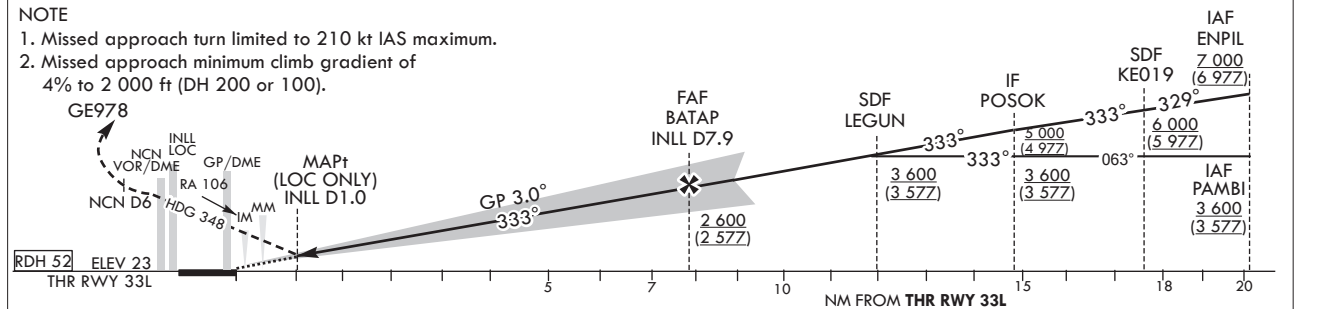
Note : Approach under ICAO Flight Procedures.



- NOTE**
1. RNAV 1 operation.
 2. GNSS or DME/DME/IRU required.
 3. ATS surveillance service required.
 4. Minimum SPD 160 kt IAS before 5 NM, 180 kt IAS before 8 NM from RWY.
 5. CAT II, CAT III require Special Aircrew and Aircraft Certification.
 6. Simultaneous approach authorized with RWY 34L/R.
 7. LOC procedure N/A during simultaneous operations.

RECOMMENDED PROFILE(LOC ONLY)		DME INLL	7	6	5	4	3	2
Final Approach Gradient 5.37%, 326 ft/NM	ALT(HGT)	2 306	1 980	1 653	1 327	1 001	674	
		(2 283)	(1 957)	(1 630)	(1 304)	(978)	(651)	

TRANSITION ALT 14 000
TRANSITION LVL FL 140



CATEGORY	DA(DH)/MDA(MDH)		A	B	C	D
	FULL	ALS INOP				
Straight-in	CAT-I (CG 2.5%)	FULL	461	1 300 m		
		ALS INOP	(438)	2 000 m		
	CAT-I (CG 4.0%)	FULL	223	RVR 550 m, VIS 800 m		
		ALS INOP	(200)	1 200 m		
LOC	FULL	440	1 200 m			
	ALS INOP	(417)	1 900 m			
CAT II		123(100)	300 m		300 m ¹⁾ / 350 m	
CAT III		-	75 m ²⁾ / 125 m			

MISSSED APPROACH

Climb to 500 ft on RWY HDG then turn right on HDG 348° to NCN 6 DME, continue climb to 4 000 ft turn left direct to GE978. Hold as published. Do not turn before passing MAPt.

- 1) For CAT D aeroplane conducting an autoland.
- 2) Aeroplane use Fail-operational system.

*Timing Not authorized for defining MAPt.
*Circling Not authorized.

Change : Amended phrase.

SEOUL/Incheon Intl(RKSI)
ILS or LOC RWY 33L
CAT II & III

AERONAUTICAL DATA TABULATION

ILS/LOC Approach to RWY 33L from PAMBI to POSOK(IF)	
Fix / Point	Coordinates
PAMBI(IAF)	37°10'54.3"N 126°32'34.4"E
POSOK(IF)	37°14'30.3"N 126°38'56.6"E

ILS/LOC Approach to RWY 33L from ENPIL to POSOK(IF)	
Fix / Point	Coordinates
ENPIL(IAF)	37°09'39.0" N 126°43'34.0" E
KE019(SDF)	37°11'58.6"N 126°41'10.5"E
POSOK(IF)	37°14'30.3"N 126°38'56.6"E

ILS/LOC Approach to RWY 33L from POSOK(IF) to MAHF	
Fix / Point	Coordinates
LEGUN(SDF)	37°18'14.5"N 126°35'38.6"E
BATAP(FAF) BRG 333.37°/7.92 NM INLL	37°20'54.7"N 126°33'16.8"E
D1.0 INLL (MAPt LOC ONLY) BRG 333.37°/1.00 NM INLL	37°26'34.2"N 126°28'15.6"E
THR RWY 33L	37°27'15.21"N 126°27'39.08"E
INLL DME	37°27'25.4"N 126°27'35.9"E
NCN VOR/DME	37°29'41.7"N 126°25'49.2"E
Climb to 500 ft HDG 333	-
D6 NCN HDG 348	-
GE978 BRG 267.72°/10 NM NCN	37°27'47.0"N 126°13'29.0"E

**INSTRUMENT
APPROACH
CHART - ICAO**

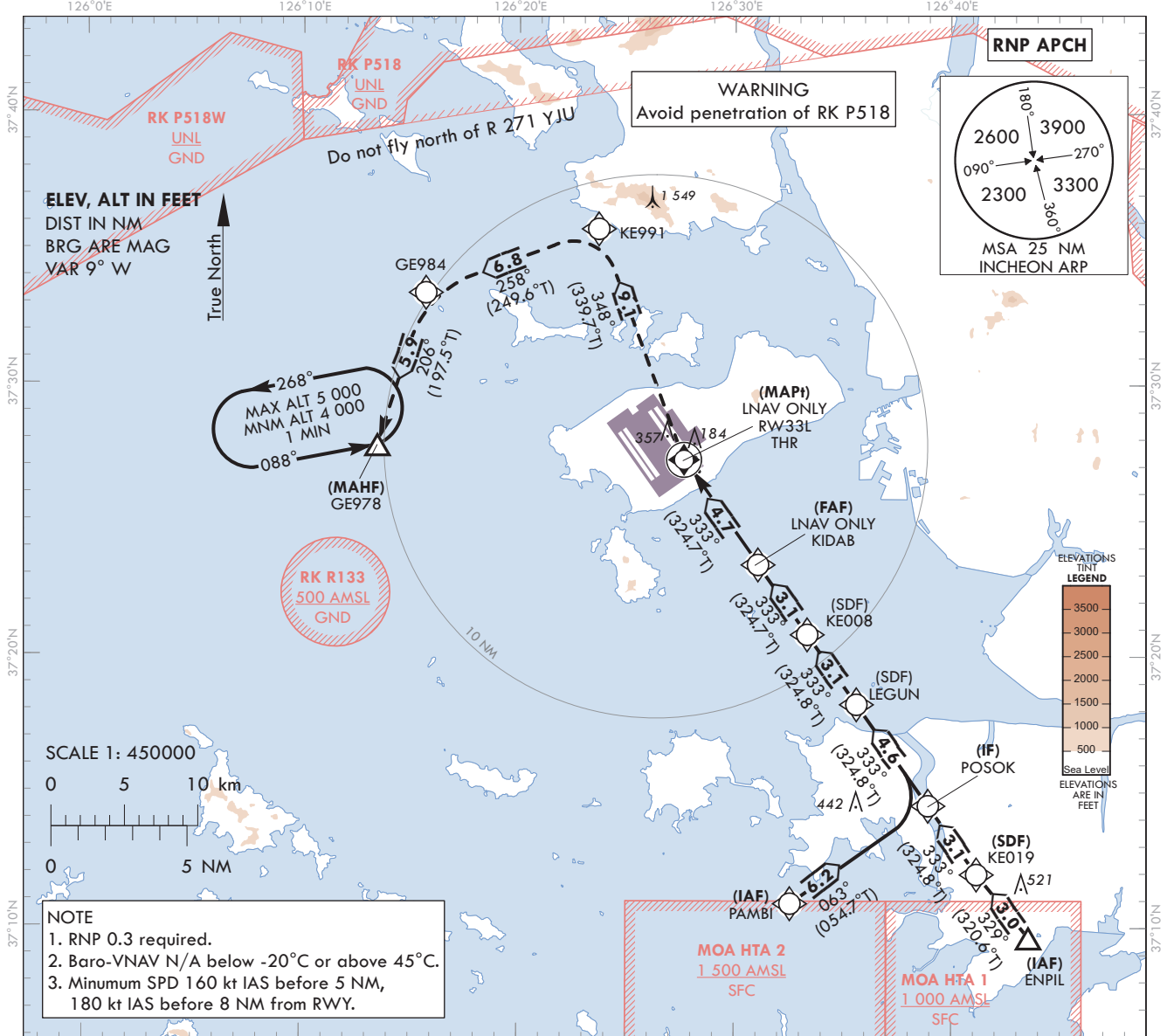
AERODROME ELEV 23 ft
HEIGHTS RELATED TO
THR RWY 33L - ELEV 23 ft

SEOUL APP	119.75
	121.35
INCHEON TWR	118.2
	118.8

SEOUL/Incheon Intl(RKSI)

RNP RWY 33L

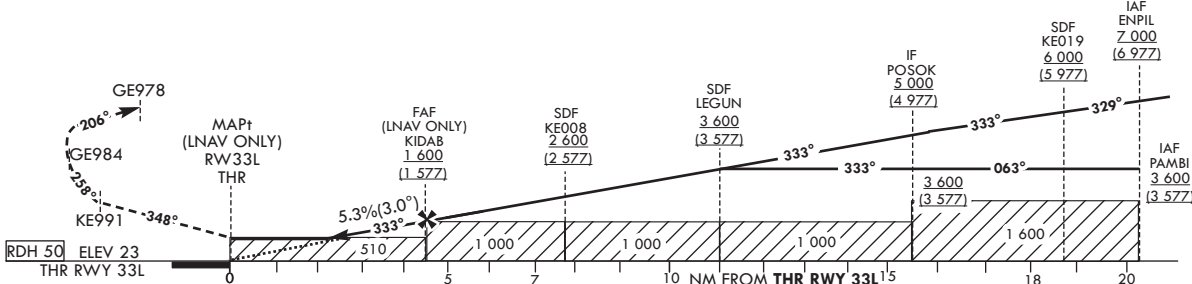
Note : Approach under ICAO Flight Procedures.



NOTE
1. RNP 0.3 required.
2. Baro-VNAV N/A below -20°C or above 45°C.
3. Minimum SPD 160 kt IAS before 5 NM,
180 kt IAS before 8 NM from RWY.

MISSED APPROACH
Climb to 4 000 ft. Track to KE991, GE984 and GE978.
Hold as published.

NOTE
1. Missed approach climb gradient of 3.0% for ATC purpose.



CATEGORY	MDA(H)/DA(H)	A	B	C	D	Rate of descent						
						Knots	60	90	120	150	180	
LNAV	FULL	510 (487)	1 500m				V/V fpm	323	484	645	807	968
	ALS INOP		2 300m									
LNAV/VNAV	FULL	430 (407)	1 200m									
	ALS INOP		1 900m									

Change : Improved clarity such as terrain.

AERONAUTICAL DATA TABULATION

Instrument Approach Procedure Coding Tables

RNP RWY 33L - via PAMBI(IAF) to GE978(MAHF)

Serial Number	Path Descriptor	Waypoint Identifier	Fly-over	Track over	Course	Distance (NM)	Turn direction	Altitude (ft)	Speed (kt)	Coordinates	VPA/TCH	Navigation specification	Remarks
001	IF	PAMBI	-	-	-	-	-	+3 600	-	37°10'54.3"N 126°32'34.4"E	-	RNP APCH	IAF
002	TF	POSOK	-	063 (054.7)	6.2	-	+3 600	-	-	37°14'30.3"N 126°38'56.6"E	-	RNP APCH	IF
003	TF	LEGUN	-	333 (324.8)	4.6	-	+3 600	-	-	37°18'14.5"N 126°35'38.6"E	-	RNP APCH	SDF
004	TF	KE008	-	333 (324.8)	3.1	-	+2 600	-	-	37°20'48.9"N 126°33'21.9"E	-	RNP APCH	SDF
005	TF	KIDAB	-	333 (324.7)	3.1	-	+1 600	-	-	37°23'23.2"N 126°31'05.1"E	-	RNP APCH	FAF
006	TF	RW33L	Y	333(324.7)	4.7	-	+510	-	-	37°27'15.2"N 126°27'39.08"E	-3.04/50	RNP APCH	MAPt
007	TF	KE991	-	348 (339.7)	9.1	-	-	-	-	37°35'45.4"N 126°23'41.5"E	-	RNP APCH	-
008	TF	GE984	-	258 (249.6)	6.8	-	-	-	-	37°33'23.2"N 126°15'41.7"E	-	RNP APCH	-
009	TF	GE978	Y	206 (197.5)	5.9	-	+4 000	-	-	37°27'47.0"N 126°13'29.0"E	-	RNP APCH	-
010	HM	GE978	Y	088 (078.9)	-	-	-5 000 +4 000	-	-	37°27'47.0"N 126°13'29.0"E	-	RNP APCH	1 min (Outbound timing)

RNP RWY 33L - via ENPIL(IAF) to GE978(MAHF)

Serial Number	Path Descriptor	Waypoint Identifier	Fly-over	Track over	Course	Distance (NM)	Turn direction	Altitude (ft)	Speed (kt)	Coordinates	VPA/TCH	Navigation specification	Remarks
001	IF	ENPIL	-	-	-	-	-	+7 000	-	37°09'39.0"N 126°43'34.0"E	-	RNP APCH	IAF
002	TF	KE019	-	329 (320.6)	3.0	-	+6 000	-	-	37°11'58.6"N 126°41'10.5"E	-	RNP APCH	SDF
003	TF	POSOK	-	333 (324.8)	3.1	-	+5 000	-	-	37°14'30.3"N 126°38'56.6"E	-	RNP APCH	IF
004	TF	LEGUN	-	333 (324.8)	4.6	-	+3 600	-	-	37°18'14.5"N 126°35'38.6"E	-	RNP APCH	SDF
005	TF	KE008	-	333 (324.8)	3.1	-	+2 600	-	-	37°20'48.9"N 126°33'21.9"E	-	RNP APCH	SDF
006	TF	KIDAB	-	333 (324.7)	3.1	-	+1 600	-	-	37°23'23.2"N 126°31'05.1"E	-	RNP APCH	FAF
007	TF	RW33L	Y	333(324.7)	4.7	-	+510	-	-	37°27'15.2"N 126°27'39.08"E	-3.04/50	RNP APCH	MAPt
008	TF	KE991	-	348 (339.7)	9.1	-	-	-	-	37°35'45.4"N 126°23'41.5"E	-	RNP APCH	-
009	TF	GE984	-	258 (249.6)	6.8	-	-	-	-	37°33'23.2"N 126°15'41.7"E	-	RNP APCH	-
010	TF	GE978	Y	206 (197.5)	5.9	-	+4 000	-	-	37°27'47.0"N 126°13'29.0"E	-	RNP APCH	-
011	HM	GE978	Y	088 (078.9)	-	-	-5 000 +4 000	-	-	37°27'47.0"N 126°13'29.0"E	-	RNP APCH	1 min (Outbound timing)

**INSTRUMENT
APPROACH
CHART - ICAO**

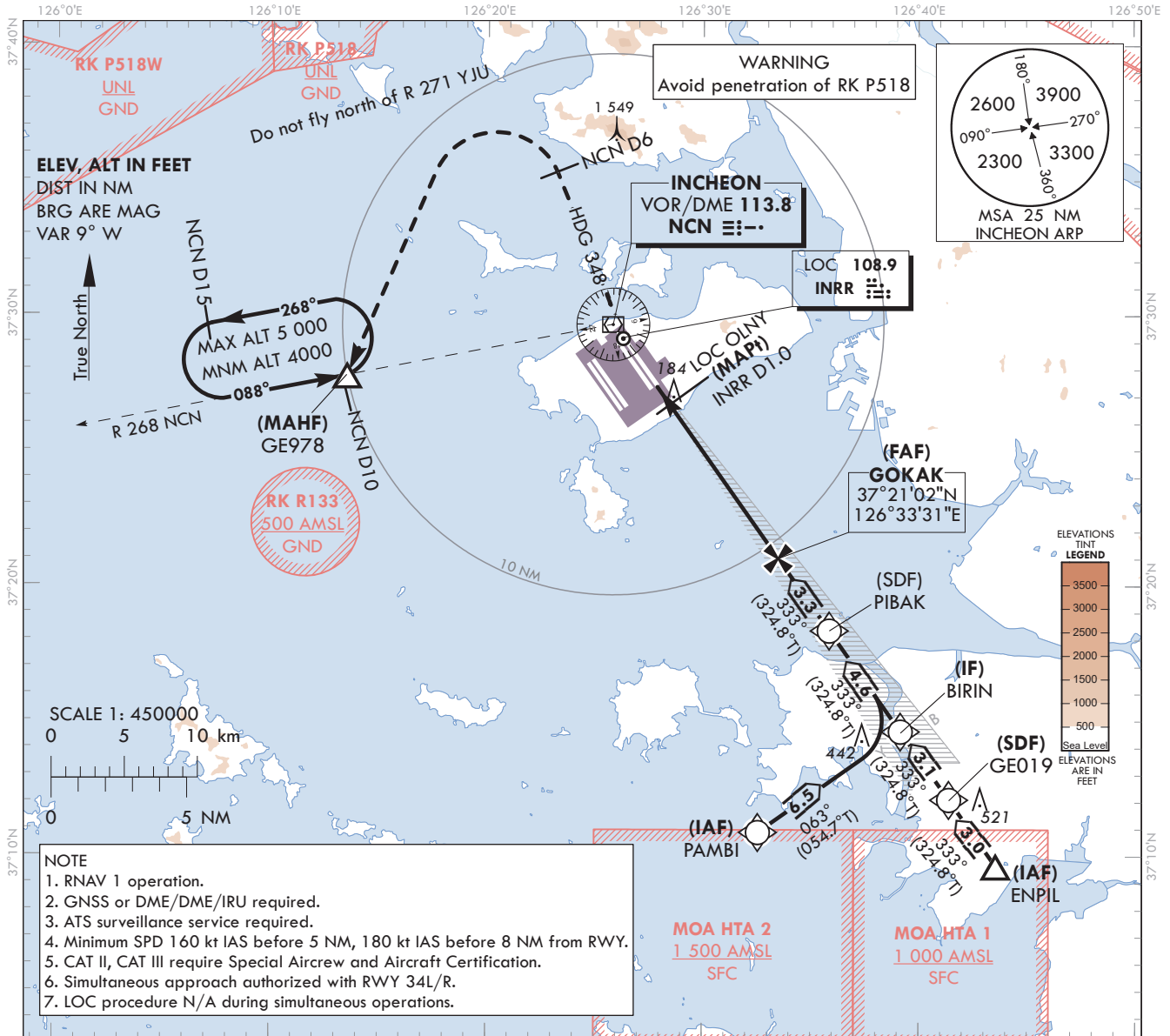
AERODROME ELEV 23 ft
HEIGHTS RELATED TO
THR RWY 33R - ELEV 23 ft

SEOUL APP	119.75
	121.35
INCHEON TWR	118.2
	118.8

SEOUL/Incheon Intl(RKSI)

**ILS or LOC RWY 33R
CAT II & III**

Note : Approach under ICAO Flight Procedures.

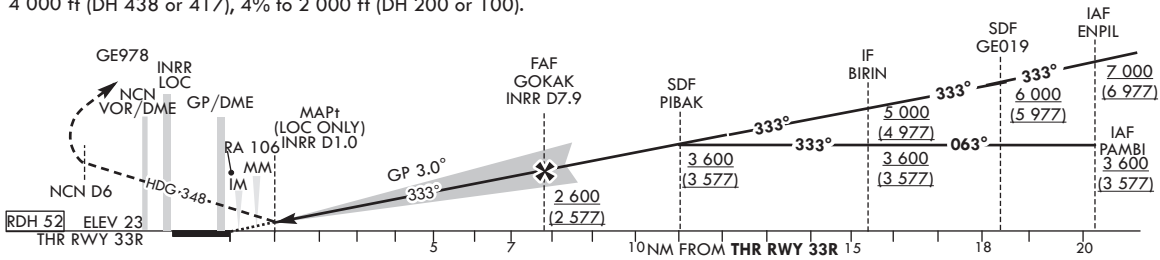


- NOTE**
1. RNAV 1 operation.
 2. GNSS or DME/DME/IRU required.
 3. ATS surveillance service required.
 4. Minimum SPD 160 kt IAS before 5 NM, 180 kt IAS before 8 NM from RWY.
 5. CAT II, CAT III require Special Aircrew and Aircraft Certification.
 6. Simultaneous approach authorized with RWY 34L/R.
 7. LOC procedure N/A during simultaneous operations.

RECOMMENDED PROFILE(LOC ONLY)	DME INRR	7	6	5	4	3	2
Final Approach Gradient 5.37%, 326 ft/NM	ALT(HGT)	2 306 (2 283)	1 980 (1 957)	1 653 (1 630)	1 327 (1 304)	1 001 (978)	674 (651)

TRANSITION ALT 14 000
TRANSITION LVL FL 140

- NOTE**
1. Missed approach turn limited to 210 kt IAS maximum.
 2. Missed approach minimum climb gradient of 2.5% to 4 000 ft (DH 438 or 417), 4% to 2 000 ft (DH 200 or 100).



MISSED APPROACH

Climb to 500 ft on RWY HDG then turn right on HDG 348° to NCN 6 DME, continue climb to 4 000 ft turn left direct to GE978. Hold as published. Do not turn before passing MAPt.

CATEGORY	DA(DH)/MDA(MDH)	A	B	C	D
Straight-in	CAT-I FULL	461		1 300 m	
	(CG 2.5%) ALS INOP	(438)		2 000 m	
	CAT-I FULL	223		RVR 550 m, VIS 800 m	
	(CG 4.0%) ALS INOP	(200)		1 200 m	
LOC	FULL	440		1 200 m	
	ALS INOP	(417)		1 900 m	
CAT II	123(100)		300 m		300 m ¹⁾ / 350 m
CAT III	-		75 m ²⁾ / 125 m		

- 1) For CAT D aeroplane conducting an autoland.
- 2) Aeroplane use Fail-operational system.

* Timing Not authorized for defining MAPt.
* Circling Not authorized.

Change : Amended phrase.

SEOUL/Incheon Intl(RKSI)
ILS or LOC RWY 33R
CAT II & III

AERONAUTICAL DATA TABULATION

ILS/LOC Approach to RWY 33R from PAMBI to BIRIN(IF)	
Fix / Point	Coordinates
PAMBI(IAF)	37°10'54.3"N 126°32'34.4"E
BIRIN(IF)	37°14'38.1"N 126°39'10.4"E

ILS/LOC Approach to RWY 33R from ENPIL to BIRIN(IF)	
Fix / Point	Coordinates
ENPIL(IAF)	37°09'39.0"N 126°43'34.0"E
GE019(SDF)	37°12'06.3"N 126°41'24.3"E
BIRIN(IF)	37°14'38.1"N 126°39'10.4"E

ILS/LOC Approach to RWY 33R from BIRIN(IF) to MAHF	
Fix / Point	Coordinates
PIBAK(SDF)	37°18'22.2"N 126°35'52.3"E
GOKAK(FAF) BRG 333.37°/7.92 NM INRR	37°21'02.4"N 126°33'30.5"E
D1.0 INRR (MAPt LOC ONLY) BRG 333.37°/1.00 NM INRR	37°26'41.9"N 126°28'29.3"E
THR RWY 33R	37°27'22.97"N 126°27'52.82"E
INRR DME	37°27'33.2"N 126°27'49.7"E
NCN VOR/DME	37°29'41.7"N 126°25'49.2"E
Climb to 500 ft HDG 333	-
D6 NCN HDG 348	-
GE978 BRG 267.72°/10 NM NCN	37°27'47.0"N 126°13'29.0"E

**INSTRUMENT
APPROACH
CHART - ICAO**

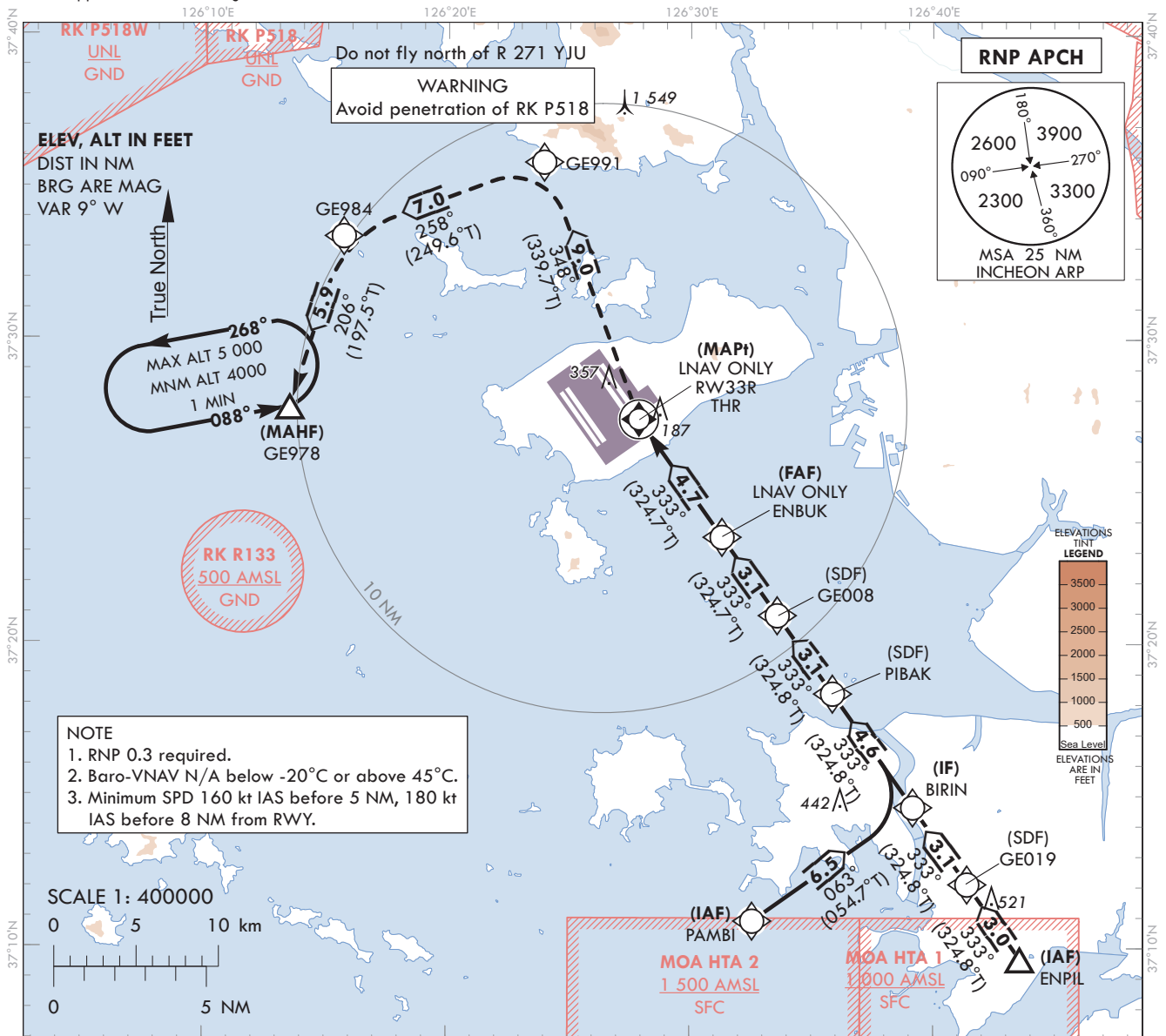
AERODROME ELEV 23 ft
HEIGHTS RELATED TO
THR RWY 33R - ELEV 23 ft

SEOUL APP	119.75
	121.35
INCHEON TWR	118.2
	118.8

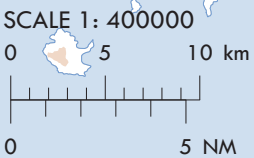
SEOUL/Incheon Intl(RKSI)

RNP RWY 33R

Note : Approach under ICAO Flight Procedures.



NOTE
1. RNP 0.3 required.
2. Baro-VNAV N/A below -20°C or above 45°C.
3. Minimum SPD 160 kt IAS before 5 NM, 180 kt IAS before 8 NM from RWY.



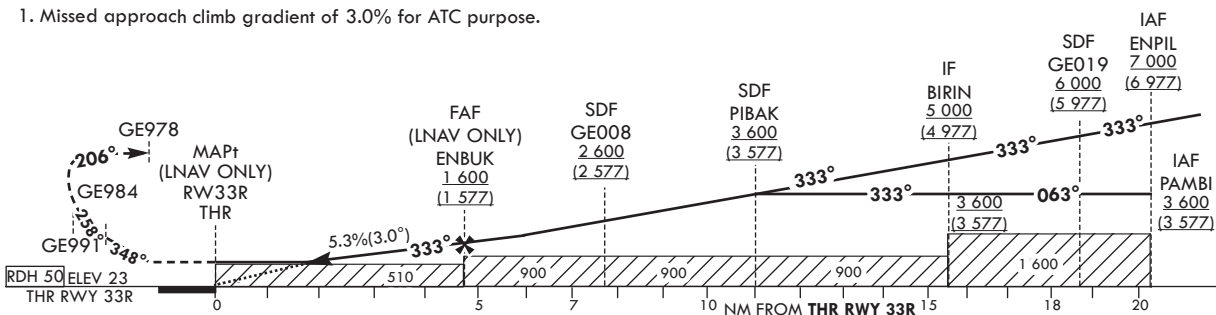
MISSED APPROACH

Climb to 4 000 ft. Track to GE991, GE984 and GE978.
Hold as published.

NOTE

1. Missed approach climb gradient of 3.0% for ATC purpose.

TRANSITION ALT 14 000
TRANSITION LVL FL 140



CATEGORY	MDA(H)/DA(H)	A	B	C	D	Knots	60	90	120	150	180	
							Rate of descent	V/V fpm	323	484	645	807
STA	LNAV	FULL	510 (487)	1 500 m			*Timing Not authorized for defining MAPt. *Circling Not authorized.					
		ALS INOP		2 300 m								
	LNAV/VNAV	FULL	1 200 m									
		ALS INOP	1 900 m									

Change : Improved clarity such as terrain.

SEOUL/Incheon Intl(RKSI)
RNP RWY 33R

AERONAUTICAL DATA TABULATION

Instrument Approach Procedure Coding Tables

RNP RWY 33R - via PAMBI(IAF) to GE978(MAHF)

Serial Number	Path Descriptor	Waypoint Identifier	Fly-over	Track over	Course	Track over	Distance (NM)	Turn direction	Altitude (ft)	Speed (kt)	Coordinates	VPA/TCH	Navigation specification	Remarks
001	IF	PAMBI	-	-	-	-	-	-	+ 3 600	-	37°10'54.3"N 126°32'34.4"E	-	RNP APCH	IAF
002	TF	BIRIN	-	063 (054.7)	-	6.5	-	+ 3 600	-	-	37°14'38.1"N 126°39'10.4"E	-	RNP APCH	IF
003	TF	PIBAK	-	333 (324.8)	-	4.6	-	+ 3 600	-	-	37°18'22.2"N 126°35'52.3"E	-	RNP APCH	SDF
004	TF	GE008	-	333 (324.8)	-	3.1	-	+ 2 600	-	-	37°20'56.6"N 126°33'35.7"E	-	RNP APCH	SDF
005	TF	ENBUK	-	333 (324.7)	-	3.1	-	+ 1 600	-	-	37°23'31.0"N 126°31'18.8"E	-	RNP APCH	FAF
006	TF	RW33R	Y	333(324.7)	-	4.7	-	+ 510	-	-	37°27'22.97"N 126°27'52.82"E	-3.04/50	RNP APCH	MAPt
007	TF	GE991	-	348 (339.7)	-	9.0	-	-	-	-	37°35'49.9"N 126°23'56.8"E	-	RNP APCH	-
008	TF	GE984	-	258 (249.6)	-	7.0	-	-	-	-	37°33'23.2"N 126°15'41.7"E	-	RNP APCH	-
009	TF	GE978	Y	206 (197.5)	-	5.9	-	+ 4 000	-	-	37°27'47.0"N 126°13'29.0"E	-	RNP APCH	-
010	HM	GE978	Y	088 (078.9)	-	-	L	-5 000 +4 000	-	-	37°27'47.0"N 126°13'29.0"E	-	RNP APCH	1 min (Outbound timing)

RNP RWY 33R - via ENPIL(IAF) to GE978(MAHF)

Serial Number	Path Descriptor	Waypoint Identifier	Fly-over	Track over	Course	Track over	Distance (NM)	Turn direction	Altitude (ft)	Speed (kt)	Coordinates	VPA/TCH	Navigation specification	Remarks
001	IF	ENPIL	-	-	-	-	-	-	+ 7 000	-	37°09'39.0"N 126°43'34.0"E	-	RNP APCH	IAF
002	TF	GE019	-	333 (324.8)	-	3.0	-	+ 6 000	-	-	37°12'06.3"N 126°41'24.3"E	-	RNP APCH	SDF
003	TF	BIRIN	-	333 (324.8)	-	3.1	-	+ 5 000	-	-	37°14'38.1"N 126°39'10.4"E	-	RNP APCH	IF
004	TF	PIBAK	-	333 (324.8)	-	4.6	-	+ 3 600	-	-	37°18'22.2"N 126°35'52.3"E	-	RNP APCH	SDF
005	TF	GE008	-	333 (324.8)	-	3.1	-	+ 2 600	-	-	37°20'56.6"N 126°33'35.7"E	-	RNP APCH	SDF
006	TF	ENBUK	-	333 (324.7)	-	3.1	-	+ 1 600	-	-	37°23'31.0"N 126°31'18.8"E	-	RNP APCH	FAF
007	TF	RW33R	Y	333(324.7)	-	4.7	-	+ 510	-	-	37°27'22.97"N 126°27'52.82"E	-3.04/50	RNP APCH	MAPt
008	TF	GE991	-	348 (339.7)	-	9.0	-	-	-	-	37°35'49.9"N 126°23'56.8"E	-	RNP APCH	-
009	TF	GE984	-	258 (249.6)	-	7.0	-	-	-	-	37°33'23.2"N 126°15'41.7"E	-	RNP APCH	-
010	TF	GE978	Y	206 (197.5)	-	5.9	-	+ 4 000	-	-	37°27'47.0"N 126°13'29.0"E	-	RNP APCH	-
011	HM	GE978	Y	088 (078.9)	-	-	L	-5 000 +4 000	-	-	37°27'47.0"N 126°13'29.0"E	-	RNP APCH	1 min (Outbound timing)

**INSTRUMENT
APPROACH
CHART - ICAO**

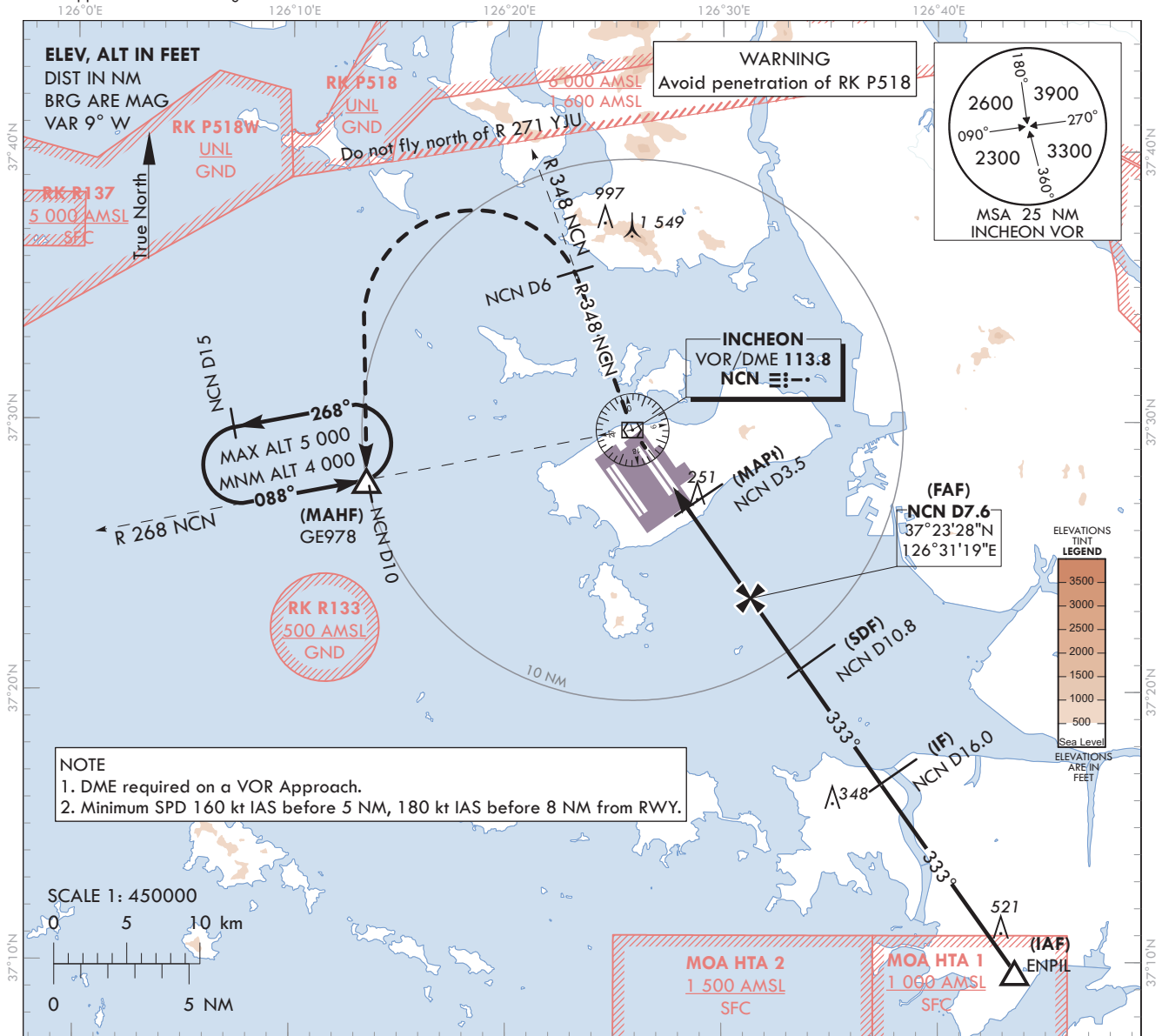
AERODROME ELEV 23 ft
HEIGHTS RELATED TO
THR RWY 33R - ELEV 23 ft

SEOUL APP	119.75
	121.35
INCHEON TWR	118.2
	118.8

SEOUL/Incheon Intl(RKSI)

VOR RWY 33R

Note : Approach under ICAO Flight Procedures.



- NOTE**
1. DME required on a VOR Approach.
 2. Minimum SPD 160 kt IAS before 5 NM, 180 kt IAS before 8 NM from RWY.

SCALE 1: 450000

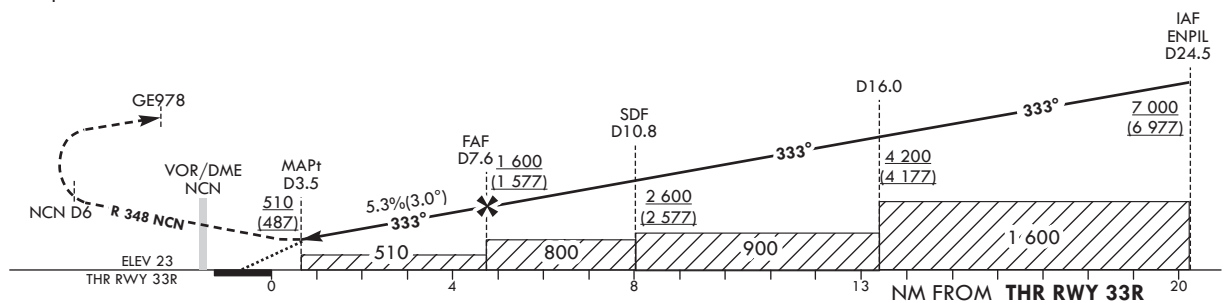


RECOMMENDED PROFILE	DME NCN	7	6	5
Final Approach Gradient 5.3%(319.8 ft/NM)	ALT(HGT)	1 441(1 418)	1 121(1 098)	801(778)

TRANSITION ALT 14 000
TRANSITION LVL FL 140

MISSED APPROACH

Climb to 4 000 ft via NCN VOR then turn right on R 348 NCN to 6 DME and turn left direct to GE978.
Hold as published.



CATEGORY	MDA(MDH)	A	B	C	D	Knots	60	90	120	150	180	
							Rate of descent	V/V fpm	320	480	640	800
Straight-in	FULL	510 (487)	1 500 m			*Timing Not authorized for defining MAPt. *Circling Not authorized.						
	ALS INOP		2 300 m									

Change : Improved clarity such as terrain.

AERONAUTICAL DATA TABULATION

VOR Approach to RWY 33R from ENPIL		
Fix / Point		Coordinates
ENPIL(IAF)		37°09'39.0"N 126°43'34.0"E
D16 NCN(IF)	BRG 333.19°/8.51 NM	37°16'35.5"N 126°37'22.8"E
D10.8 NCN(SDF)	BRG 333.00°/10.80 NM NCN	37°20'51.0"N 126°33'37.9"E
D7.6 NCN(FAF)	BRG 333.00°/7.60 NM NCN	37°23'28.2"N 126°31'19.3"E
D3.5 NCN(MAPt)	BRG 333.00°/3.50 NM NCN	37°26'49.6"N 126°28'21.5"E
THR RWY 33R	Final approach descent angle 3°	37°27'22.97"N 126°27'52.82"E
NCN VOR/DME		37°29'41.7"N 126°25'49.2"E
D6 NCN	R 348 NCN/6.00 NM NCN	37°35'19.7"N 126°23'12.9"E
GE978	BRG 267.72°/10.00 NM NCN	37°27'47.0"N 126°13'29.0"E

**INSTRUMENT
APPROACH
CHART - ICAO**

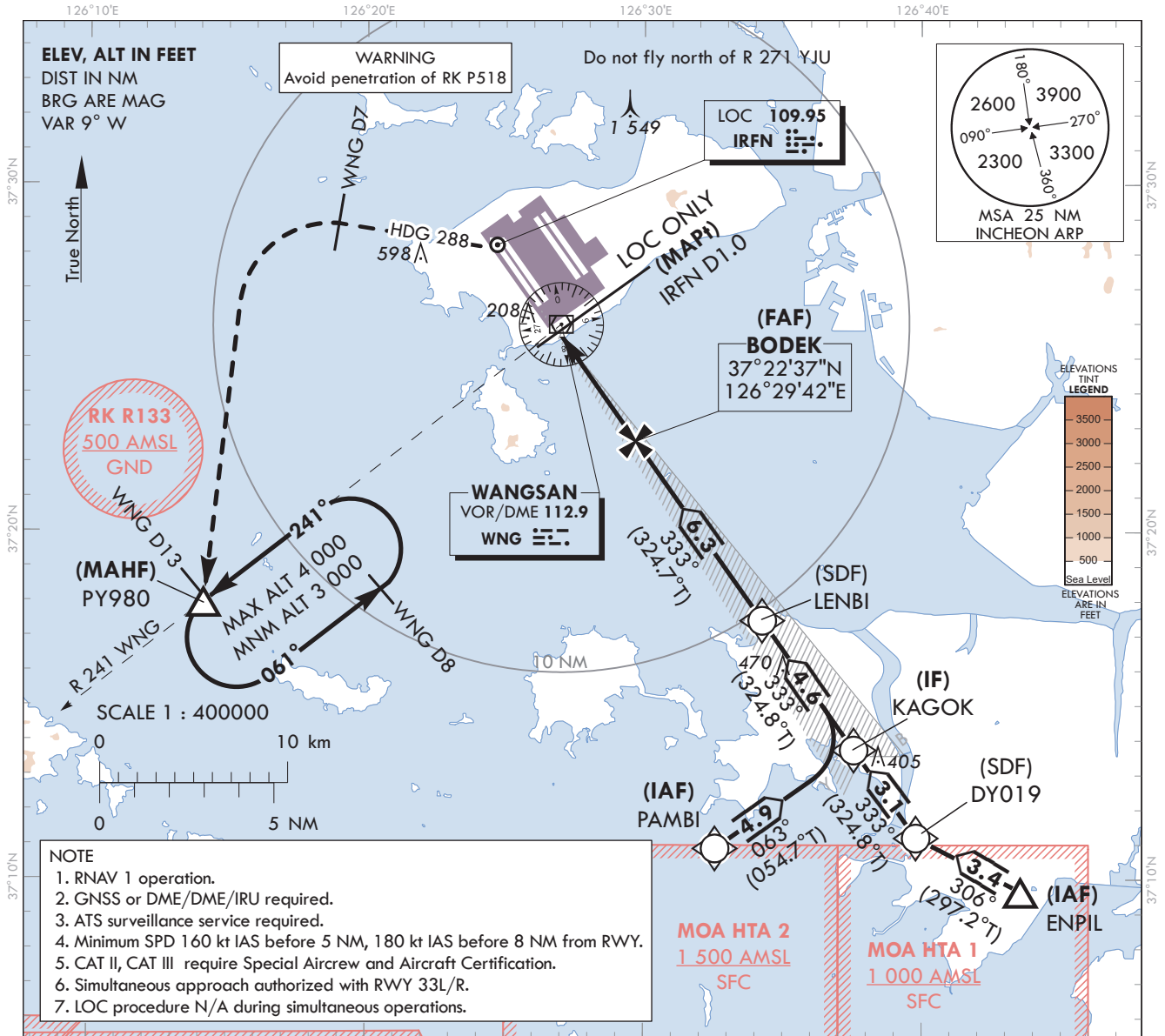
Note : Approach under ICAO Flight Procedures.

AERODROME ELEV 23 ft
HEIGHTS RELATED TO
THR RWY 34L - ELEV 23 ft

SEOUL APP	119.75
	121.35
INCHEON TWR	118.2
	118.8

SEOUL/Incheon Intl(RKSI)

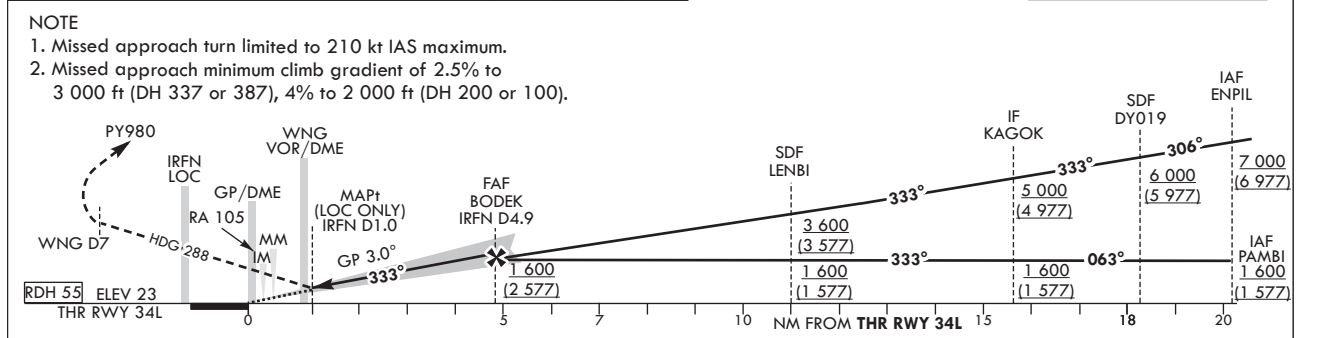
**ILS or LOC RWY 34L
CAT II & III**



- NOTE**
1. RNAV 1 operation.
 2. GNSS or DME/DME/IRU required.
 3. ATS surveillance service required.
 4. Minimum SPD 160 kt IAS before 5 NM, 180 kt IAS before 8 NM from RWY.
 5. CAT II, CAT III require Special Aircrew and Aircraft Certification.
 6. Simultaneous approach authorized with RWY 33L/R.
 7. LOC procedure N/A during simultaneous operations.

RECOMMENDED PROFILE(LOC ONLY)	DME IRFN	4	3	2
Final Approach Gradient 5.30%, 322 ft/NM	ALT(HGT)	1 310 (1 287)	988 (965)	666 (643)

TRANSITION ALT 14 000
TRANSITION LVL FL 140



CATEGORY	DA(DH)/MDA(MDH)	A				B		C		D		MISSED APPROACH Climb to 500 ft on RWY HDG then turn left on HDG 288° to WNG 7 DME, continue climb to 3 000 ft turn left direct to PY980. Hold as published. Do not turn before passing MAPt. 1) For CAT D aeroplane conducting on autoland. 2) Aeroplane use Fail-operational system. * Timing Not authorized for defining the MAPt. * Circling Not authorized.
		A	B	C	D	300 m	300 m ¹⁾ / 350 m	300 m ¹⁾ / 350 m	75 m ²⁾ / 125 m			
Straight-in	CAT-I (CG 2.5%)	FULL	360 (337)	800 m								
		ALS INOP		1 500 m								
	CAT-I (CG 4.0%)	FULL	223 (200)	RVR 550 m, VIS 800 m								
		ALS INOP		1 200 m								
LOC	FULL	410 (387)	1 100 m									
	ALS INOP		1 800 m									
CAT II	123(100)	300 m		300 m ¹⁾ / 350 m								
CAT III	-	75 m ²⁾ / 125 m										

Change : Amended phrase.

SEOUL/Incheon Intl(RKSI)
ILS or LOC RWY 34L
CAT II & III

AERONAUTICAL DATA TABULATION

ILS/LOC Approach to RWY 34L from PAMBI to KAGOK(IF)	
Fix / Point	Coordinates
PAMBI(IAF)	37°10'54.3"N 126°32'34.4"E
KAGOK(IF)	37°13'43.8"N 126°37'34.2"E

ILS/LOC Approach to RWY 34L from ENPIL to KAGOK(IF)	
Fix / Point	Coordinates
ENPIL(IAF)	37°09'39.0"N 126°43'34.0"E
DY019(SDF)	37°11'12.0"N 126°39'48.0"E
KAGOK(IF)	37°13'43.8"N 126°37'34.2"E

ILS/LOC Approach to RWY 34L from KAGOK(IF) to MAHF	
Fix / Point	Coordinates
LENBI(SDF)	37°17'27.8"N 126°34'16.1"E
BODEK(FAF)	BRG 333.20°/4.89 NM IRFN 37°22'37.3"N 126°29'41.9"E
D1.0 IRFN (MAPt LOC ONLY)	BRG 333.20°/1.00 NM IRFN 37°25'48.0"N 126°26'52.4"E
WNG VOR/DME	37°25'58.6"N 126°27'00.0"E
THR RWY 34L	37°26'28.50"N 126°26'16.45"E
IRFN DME	37°26'34.7"N 126°26'04.9"E
Climb to 500 ft	HDG 333 -
D7 WNG	HDG 288 -
PY980	BRG 240.75°/13.00 NM WNG 37°17'58.7"N 126°14'09.0"E

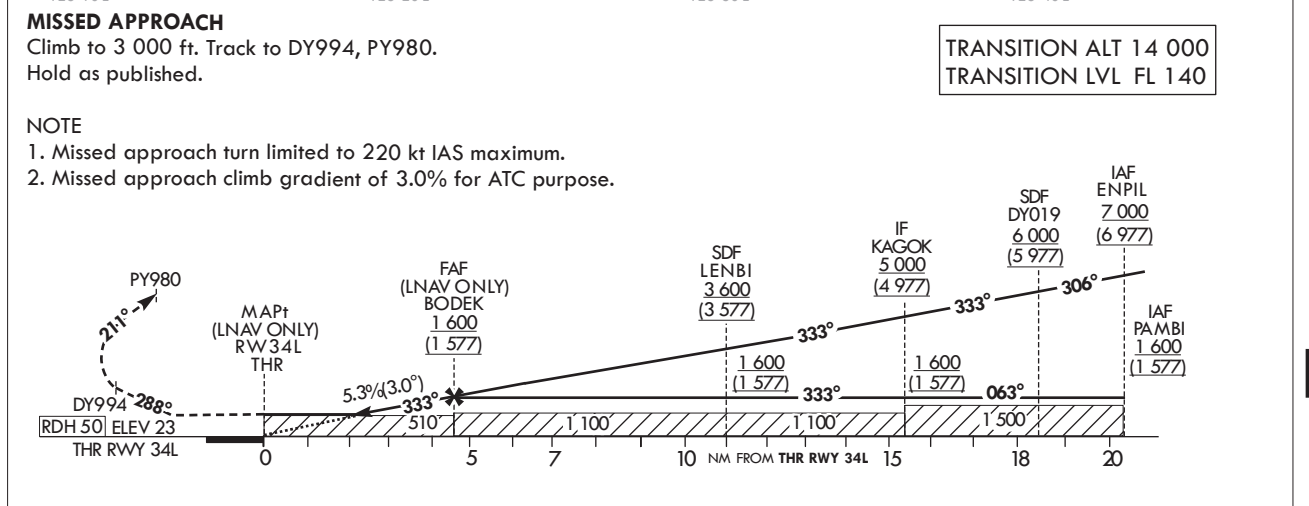
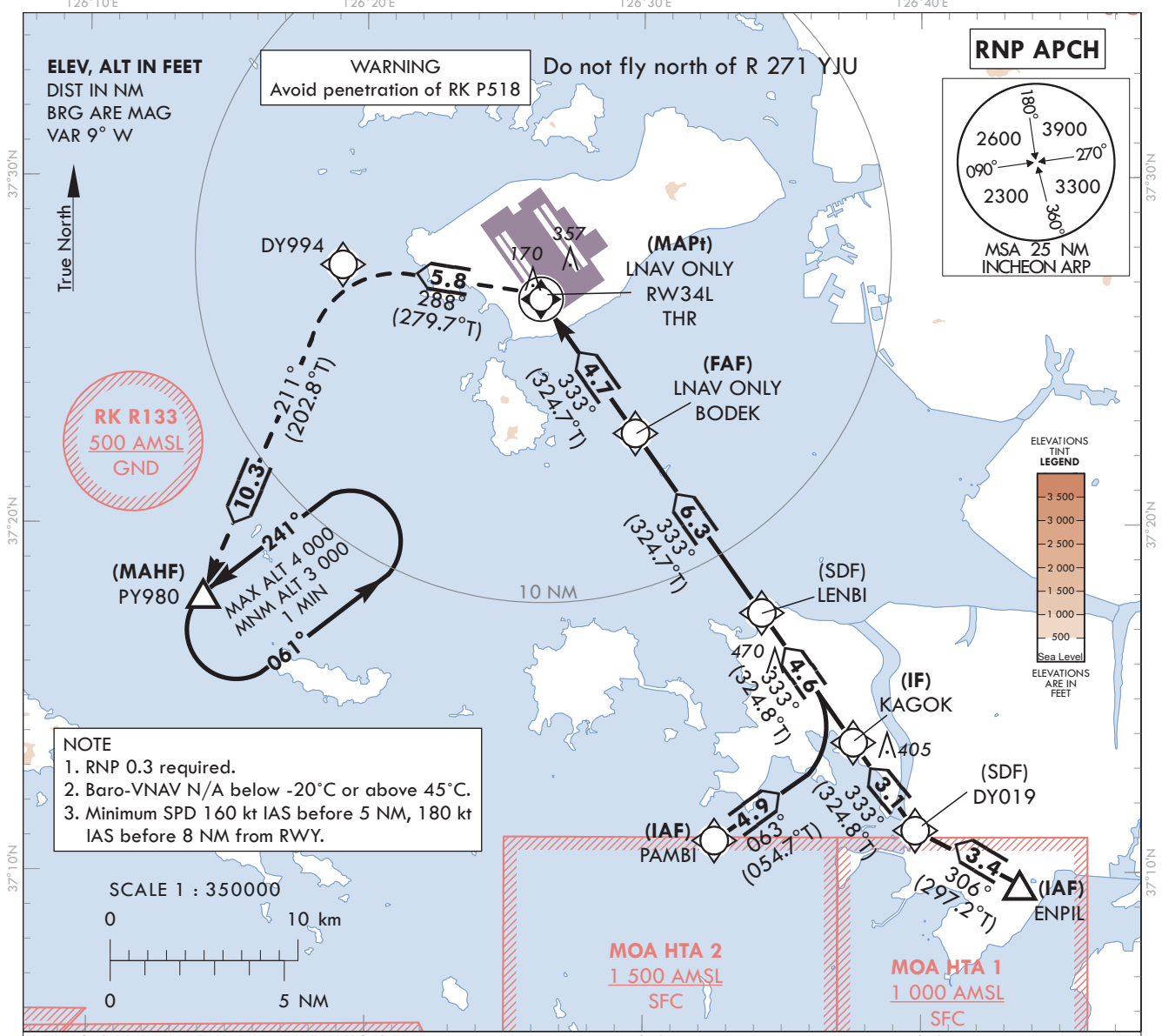
**INSTRUMENT
APPROACH
CHART - ICAO**

AERODROME ELEV 23 ft
HEIGHTS RELATED TO
THR RWY 34L - ELEV 23 ft

SEOUL APP 119.75
121.35
INCHEON TWR 118.2
118.8

SEOUL/Incheon Intl(RKSI)
RNP RWY 34L

Note : Approach under ICAO Flight Procedures.



CATEGORY		MDA(H)/DA(H)	A	B	C	D							
STA	LNAV	FULL	510 (487)		1 500 m		Rate of descent	Knots V/V fpm	60	90	120	150	180
		ALS INOP		2 300 m		324			486	647	809	971	
	LNAV/VNAV	FULL	430 (407)		1 200 m		* Timing Not authorized for defining MAPt. * Circling Not authorized.						
		ALS INOP		1 900 m									

Change : Amended phrase(RWY 34 → RWY 34L) and Establishment of ALT limitation for LENBI.

AERONAUTICAL DATA TABULATION

Instrument Approach Procedure Coding Tables

RNP RWY 34L - via PAMBI to PY980(MAHF)

Serial Number	Path Descriptor	Waypoint Identifier	Fly-over	Course/Track °M(°T)	Distance (NM)	Turn direction	Altitude (ft)	Speed (kt)	Coordinates	VPA/ RDH	Navigation specification	Remarks
001	IF	PAMBI	-	-	-	-	+1 600	-	37°10'54.3"N 126°32'34.4"E	-	RNP APCH	IAF
002	TF	KAGOK	-	063 (054.7)	4.9	-	+1 600	-	37°13'43.8"N 126°37'34.2"E	-	RNP APCH	IF
003	TF	LENBI	-	333 (324.8)	4.6	-	+1 600	-	37°17'27.8"N 126°34'16.1"E	-	RNP APCH	SDF
004	TF	BODEK	-	333 (324.7)	6.3	-	+1 600	-	37°22'37.3"N 126°29'41.9"E	-	RNP APCH	FAF
005	TF	RW34L	Y	333 (324.7)	4.7	-	+510	-	37°26'28.50"N 126°26'16.45"E	-3.04/50	RNP APCH	MAPt
006	TF	DY994	-	288 (279.7)	5.8	-	-	-220	37°27'26.9"N 126°19'07.5"E	-	RNP APCH	-
007	TF	PY980	Y	211 (202.8)	10.3	-	+3 000	-220	37°17'58.7"N 126°14'09.0"E	-	RNP APCH	MAHF
008	HM	PY980	Y	241 (232.0)	-	L	-4 000 +3 000	-	37°17'58.7"N 126°14'09.0"E	-	RNP APCH	1 min (Outbound timing)

RNP RWY 34L - via ENPIL(IAF) to PY980(MAHF)

Serial Number	Path Descriptor	Waypoint Identifier	Fly-over	Course/Track °M(°T)	Distance (NM)	Turn direction	Altitude (ft)	Speed (kt)	Coordinates	VPA/ RDH	Navigation specification	Remarks
001	IF	ENPIL	-	-	-	-	+7 000	-	37°09'39.0"N 126°43'34.0"E	-	RNP APCH	IAF
002	TF	DY019	-	306 (297.2)	3.4	-	+6 000	-	37°11'12.0"N 126°39'48.0"E	-	RNP APCH	SDF
003	TF	KAGOK	-	333 (324.8)	3.1	-	+5 000	-	37°13'43.8"N 126°37'34.2"E	-	RNP APCH	IF
004	TF	LENBI	-	333 (324.8)	4.6	-	+3 600	-	37°17'27.8"N 126°34'16.1"E	-	RNP APCH	SDF
005	TF	BODEK	-	333 (324.7)	6.3	-	+1 600	-	37°22'37.3"N 126°29'41.9"E	-	RNP APCH	FAF
006	TF	RW34L	Y	333 (324.7)	4.7	-	+510	-	37°26'28.50"N 126°26'16.45"E	-3.04/50	RNP APCH	MAPt
007	TF	DY994	-	288 (279.7)	5.8	-	-	-220	37°27'26.9"N 126°19'07.5"E	-	RNP APCH	-
008	TF	PY980	Y	211 (202.8)	10.3	-	+3 000	-220	37°17'58.7"N 126°14'09.0"E	-	RNP APCH	MAHF
009	HM	PY980	Y	241 (232.0)	-	L	-4 000 +3 000	-	37°17'58.7"N 126°14'09.0"E	-	RNP APCH	1 min (Outbound timing)

**INSTRUMENT
APPROACH
CHART - ICAO**

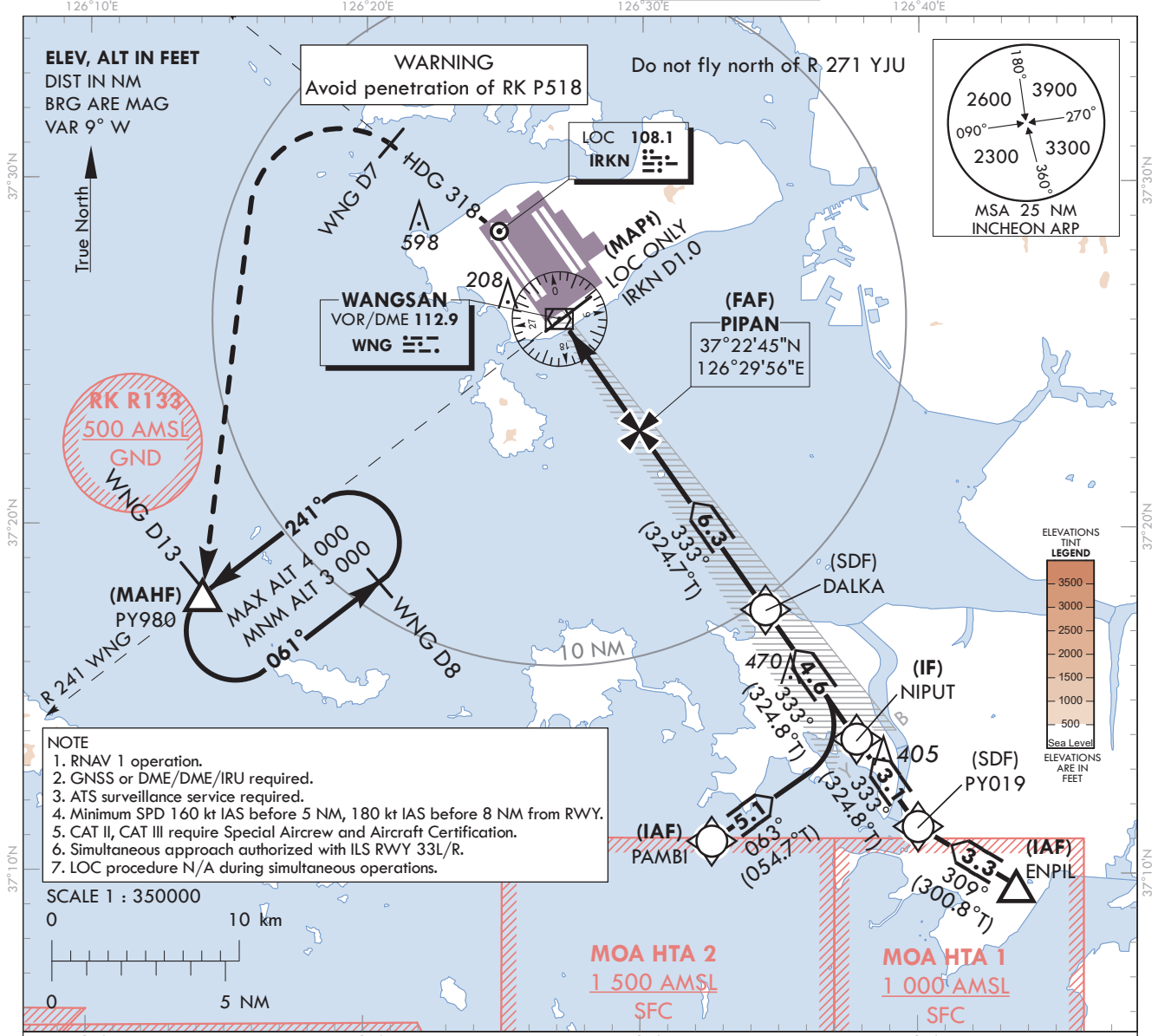
Note : Approach under ICAO Flight Procedures.

AERODROME ELEV 23 ft
HEIGHTS RELATED TO
THR RWY 34R - ELEV 23 ft

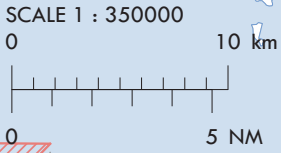
SEOUL APP	119.75
	121.35
INCHEON TWR	118.2
	118.8

SEOUL/Incheon Intl(RKSI)

**ILS or LOC RWY 34R
CAT II & III**



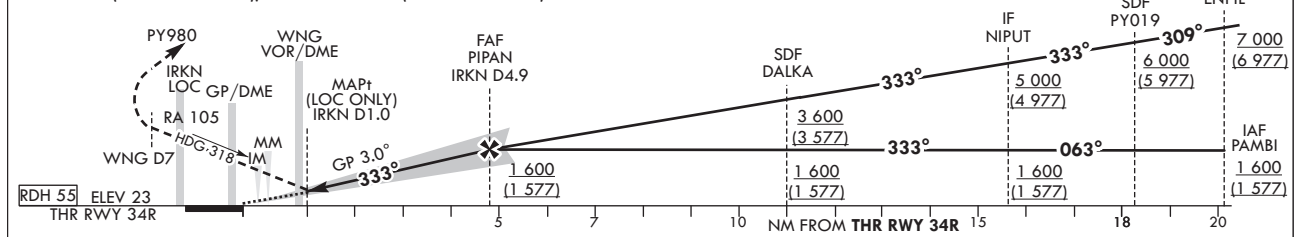
- NOTE**
1. RNAV 1 operation.
 2. GNSS or DME/DME/IRU required.
 3. ATS surveillance service required.
 4. Minimum SPD 160 kt IAS before 5 NM, 180 kt IAS before 8 NM from RWY.
 5. CAT II, CAT III require Special Aircrew and Aircraft Certification.
 6. Simultaneous approach authorized with ILS RWY 33L/R.
 7. LOC procedure N/A during simultaneous operations.



RECOMMENDED PROFILE(LOC ONLY)		DME IRKN	4	3	2
Final Approach Gradient 5.30%, 322 ft/NM		ALT(HGT)	1 311 (1 288)	988 (965)	666 (643)

TRANSITION ALT 14 000
TRANSITION LVL FL 140

- NOTE**
1. Missed approach turn limited to 210 kt IAS maximum.
 2. Missed approach minimum climb gradient of 2.5% to 3 000 ft (DH 242 or 377), 3% to 2 000 ft (DH 200 or 100).



CATEGORY	DA(DH)/MDA(MDH)	A				B				C				D								
		CAT-I (CG 2.5%)		CAT-I (CG 3.0%)		LOC		CAT II		CAT III		CAT-I (CG 2.5%)		CAT-I (CG 3.0%)		LOC		CAT II		CAT III		
Straight-in	FULL	265 (242)	RVR 550 m, VIS 800 m				RVR 550 m, VIS 800 m				RVR 550 m, VIS 800 m				RVR 550 m, VIS 800 m							
			ALS INOP		ALS INOP		ALS INOP		ALS INOP		ALS INOP		ALS INOP		ALS INOP		ALS INOP		ALS INOP		ALS INOP	
	FULL		223 (200)	RVR 550 m, VIS 800 m				RVR 550 m, VIS 800 m				RVR 550 m, VIS 800 m				RVR 550 m, VIS 800 m						
	ALS INOP		ALS INOP		ALS INOP		ALS INOP		ALS INOP		ALS INOP		ALS INOP		ALS INOP		ALS INOP		ALS INOP		ALS INOP	
	LOC		400 (377)	RVR 550 m, VIS 800 m				RVR 550 m, VIS 800 m				RVR 550 m, VIS 800 m				RVR 550 m, VIS 800 m						
	ALS INOP		ALS INOP		ALS INOP		ALS INOP		ALS INOP		ALS INOP		ALS INOP		ALS INOP		ALS INOP		ALS INOP		ALS INOP	
CAT II		123(100)	300 m				300 m				300 m				300 m							
CAT III		-	75 m ²⁾ / 125 m				75 m ²⁾ / 125 m				75 m ²⁾ / 125 m				75 m ²⁾ / 125 m							

MISSED APPROACH
Climb to 500 ft on RWY HDG then turn left on HDG 318° to WNG 7 DME, continue climb to 3 000 ft turn left direct to PY980. Hold as published. Do not turn before passing MAPt.

1) For CAT D aeroplane conducting an autoland.
2) Aeroplane use Fail-operational system.

* Timing Not authorized for defining MAPt.
* Circling Not authorized.

Change : Amended phrase.

SEOUL/Incheon Intl(RKSI)
ILS or LOC RWY 34R
CAT II & III

AERONAUTICAL DATA TABULATION

ILS/LOC Approach to RWY 34R from PAMBI to NIPUT(IF)	
Fix / Point	Coordinates
PAMBI(IAF)	37°10'54.3"N 126°32'34.4"E
NIPUT(IF)	37°13'51.5"N 126°37'47.9"E

ILS/LOC Approach to RWY 34R from ENPIL to NIPUT(IF)	
Fix / Point	Coordinates
ENPIL(IAF)	37°09'39.0"N 126°43'34.0"E
PY019(SDF)	37°11'20.4"N 126°40'01.2"E
NIPUT(IF)	37°13'51.5"N 126°37'47.9"E

ILS/LOC Approach to RWY 34R from NIPUT(IF) to MAHF	
Fix / Point	Coordinates
DALKA(SDF)	37°17'35.6"N 126°34'29.8"E
PIPAN(FAF) BRG 333.34°/4.89 NM IRKN	37°22'45.1"N 126°29'55.6"E
D1.0 IRKN (MAPt LOC ONLY) BRG 333.34°/1.00 NM IRKN	37°25'55.7"N 126°27'06.3"E
WNG VOR/DME	37°25'58.6"N 126°27'00.0"E
THR RWY 34R	37°26'36.29"N 126°26'30.21"E
IRKN DME	37°26'42.5"N 126°26'18.8"E
Climb to 500 ft HDG 333	-
D7 WNG HDG 318	-
PY980 BRG 240.75°/13.00 NM WNG	37°17'58.7"N 126°14'09.0"E

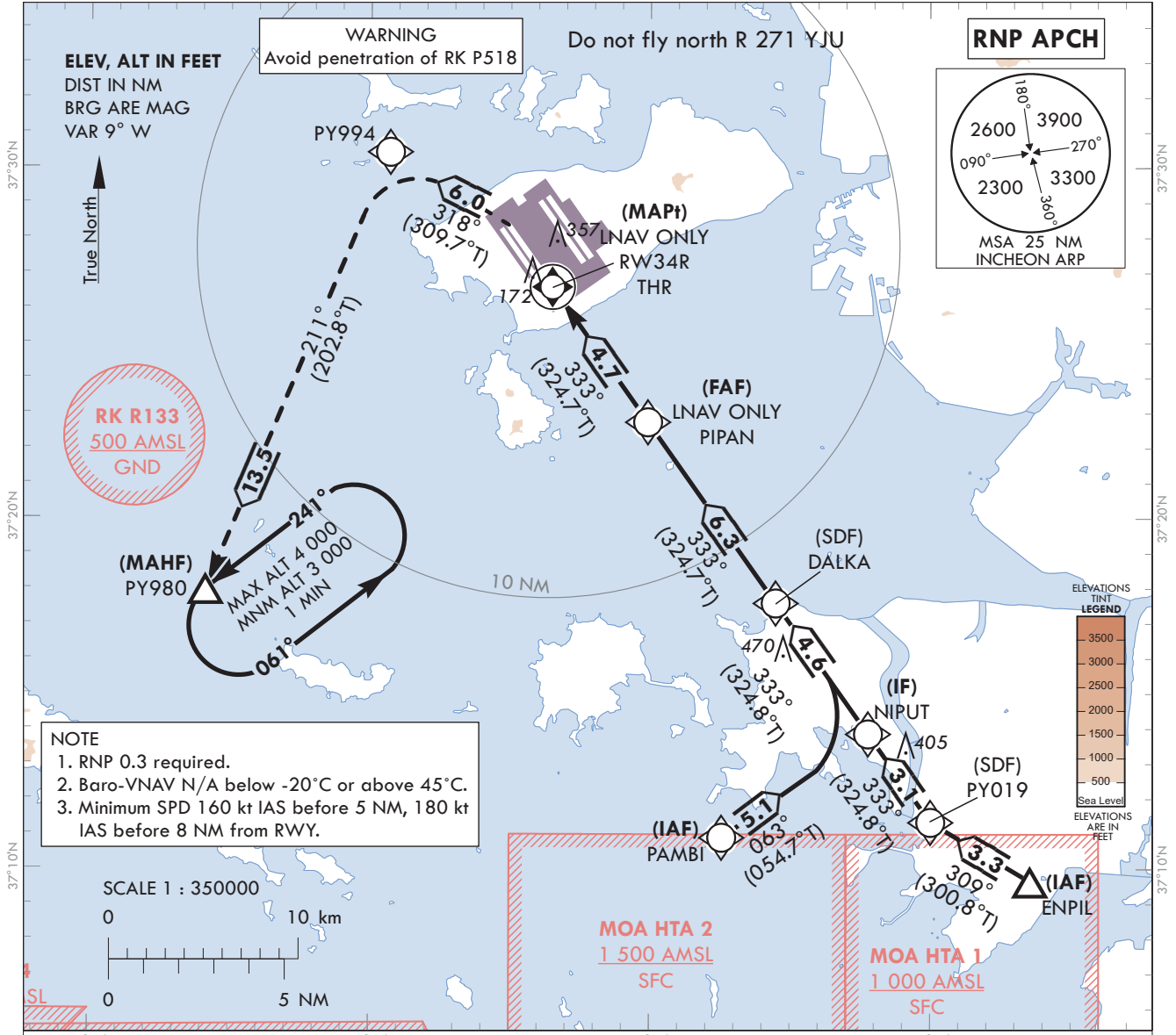
INSTRUMENT APPROACH CHART - ICAO

AERODROME ELEV 23 ft
HEIGHTS RELATED TO
THR RWY 34R - ELEV 23 ft

SEOUL	APP	119.75
		121.35
INCHEON	TWR	118.2
		118.8

SEOUL/Incheon Intl(RKSI)
RNP RWY 34R

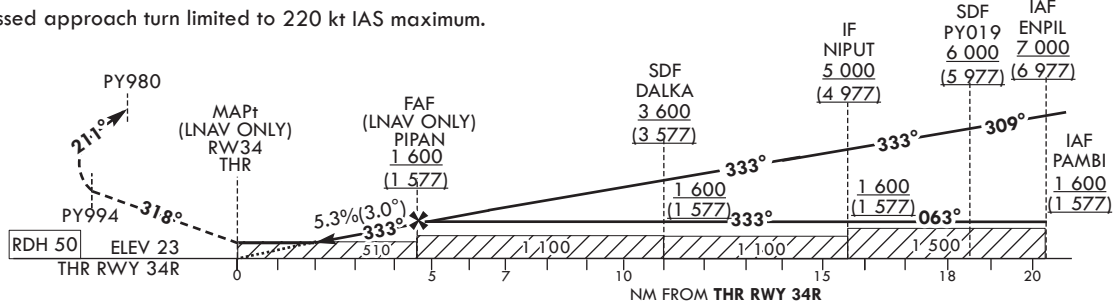
Note : Approach under ICAO Flight Procedures.
126°10'E 126°20'E 126°30'E 126°40'E



NOTE
1. RNP 0.3 required.
2. Baro-VNAV N/A below -20°C or above 45°C.
3. Minimum SPD 160 kt IAS before 5 NM, 180 kt IAS before 8 NM from RWY.

MISSED APPROACH
Climb to 3 000 ft. Track to PY994, PY980.
Hold as published.

NOTE
1. Missed approach turn limited to 220 kt IAS maximum.



CATEGORY		MDA(H)/DA(H)	A	B	C	D							
STA	LNAV	FULL	510 (487)		1 500 m		Rate of descent	Knots	60	90	120	150	180
		ALS INOP		2 300 m		V/V fpm			324	486	647	809	971
	LNAV/VNAV	FULL	430 (407)		1 200 m		* Timing Not authorized for defining MAPt. * Circling Not authorized.						
		ALS INOP		1 900 m									

Change : Establishment of ALT limitation for DALKA.

SEOUL/Incheon Intl(RKSI)
RNP RWY 34R

AERONAUTICAL DATA TABULATION

Instrument Approach Procedure Coding Tables

RNP RWY 34R - via PAMBI(IAF) to PY980(MAHF)

Serial Number	Path Descriptor	Waypoint Identifier	Fly-over	Course/Track over	Distance (NM)	Turn direction	Altitude (ft)	Speed (kt)	Coordinates	VPA/TCH	Navigation specification	Remarks
001	IF	PAMBI	-	-	-	-	+1 600	-	37°10'54.3"N 126°32'34.4"E	-	RNP APCH	IAF
002	TF	NIPUT	-	063 (054.7)	5.1	-	+1 600	-	37°13'51.5"N 126°37'47.9"E	-	RNP APCH	IF
003	TF	DALKA	-	333 (324.8)	4.6	-	+1 600	-	37°17'35.6"N 126°34'29.8"E	-	RNP APCH	SDF
004	TF	PIPAN	-	333 (324.7)	6.3	-	+1 600	-	37°22'45.1"N 126°29'55.6"E	-	RNP APCH	FAF
005	TF	RW34R	Y	333(324.7)	4.7	-	+510	-	37°26'36.29"N 126°26'30.21"E	-3.04/50	RNP APCH	MAPt
006	TF	PY994	-	318 (309.7)	6.0	-	-	-220	37°30'26.2"N 126°20'41.9"E	-	RNP APCH	-
007	TF	PY980	Y	211 (202.8)	13.5	-	+3 000	-220	37°17'58.7"N 126°14'09.0"E	-	RNP APCH	-
008	HM	PY980	Y	241 (232.0)	-	L	-4 000 +3 000	-	37°17'58.7"N 126°14'09.0"E	-	RNP APCH	1 min (Outbound timing)

RNP RWY 34R - via ENPIL(IAF) to PY980(MAHF)

Serial Number	Path Descriptor	Waypoint Identifier	Fly-over	Course/Track over	Distance (NM)	Turn direction	Altitude (ft)	Speed (kt)	Coordinates	VPA/TCH	Navigation specification	Remarks
001	IF	ENPIL	-	-	-	-	+7 000	-	37°09'39.0"N 126°43'34.0"E	-	RNP APCH	IAF
002	TF	PY019	-	309 (300.8)	3.3	-	+6 000	-	37°11'20.4"N 126°40'01.2"E	-	RNP APCH	SDF
003	TF	NIPUT	-	333 (324.8)	3.1	-	+5 000	-	37°13'51.5"N 126°37'47.9"E	-	RNP APCH	IF
004	TF	DALKA	-	333 (324.8)	4.6	-	+3 600	-	37°17'35.6"N 126°34'29.8"E	-	RNP APCH	SDF
005	TF	PIPAN	-	333 (324.7)	6.3	-	+1 600	-	37°22'45.1"N 126°29'55.6"E	-	RNP APCH	FAF
006	TF	RW34R	Y	333(324.7)	4.7	-	+510	-	37°26'36.29"N 126°26'30.21"E	-3.04/50	RNP APCH	MAPt
007	TF	PY994	-	318 (309.7)	6.0	-	-	-220	37°30'26.2"N 126°20'41.9"E	-	RNP APCH	-
008	TF	PY980	Y	211 (202.8)	13.5	-	+3 000	-220	37°17'58.7"N 126°14'09.0"E	-	RNP APCH	-
009	HM	PY980	Y	241 (232.0)	-	L	-4 000 +3 000	-	37°17'58.7"N 126°14'09.0"E	-	RNP APCH	1 min (Outbound timing)